

Summer forage management

Gabriel Pent, Ph.D.

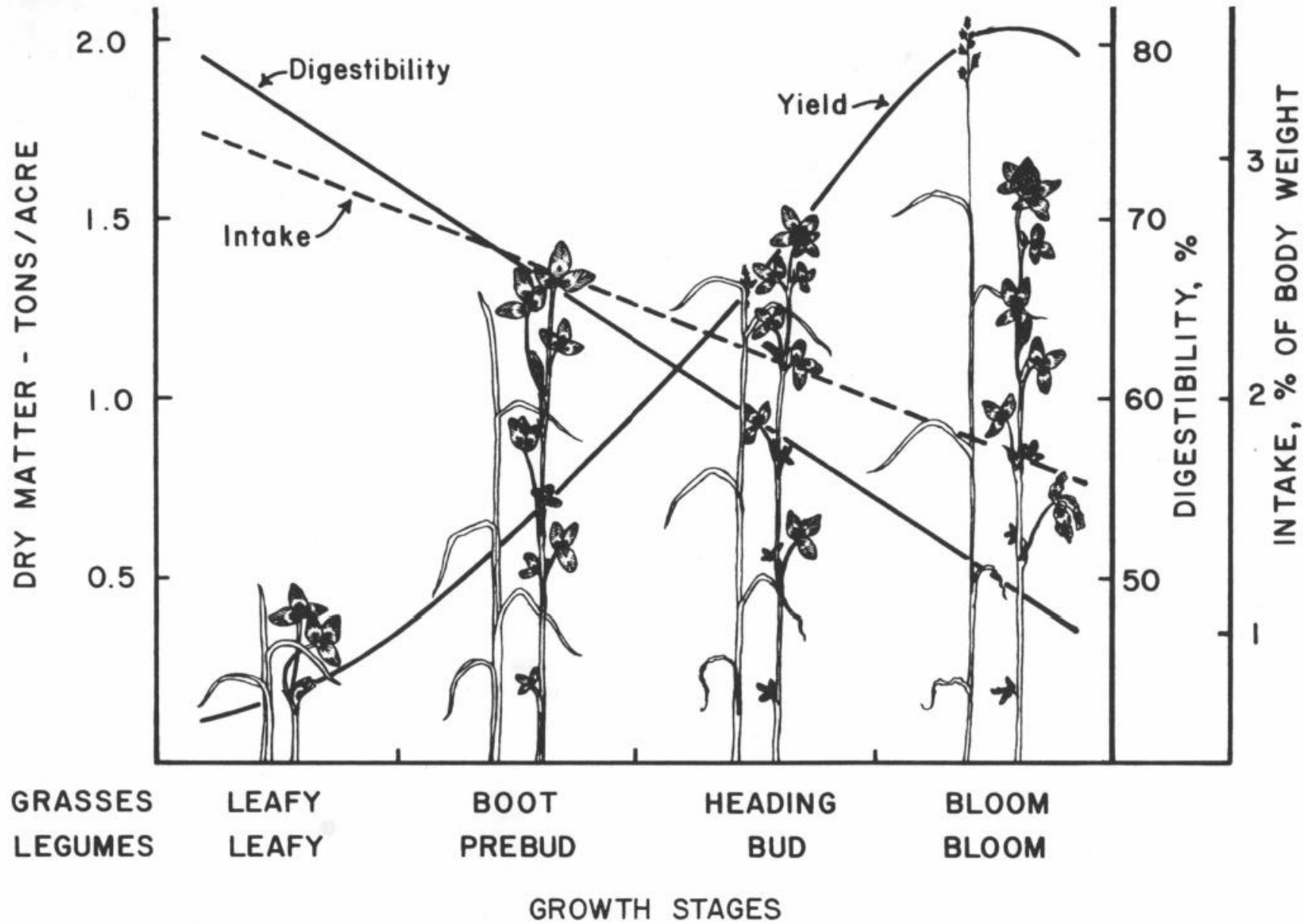
Shenandoah Valley AREC

McCormick Farm

Virginia Tech

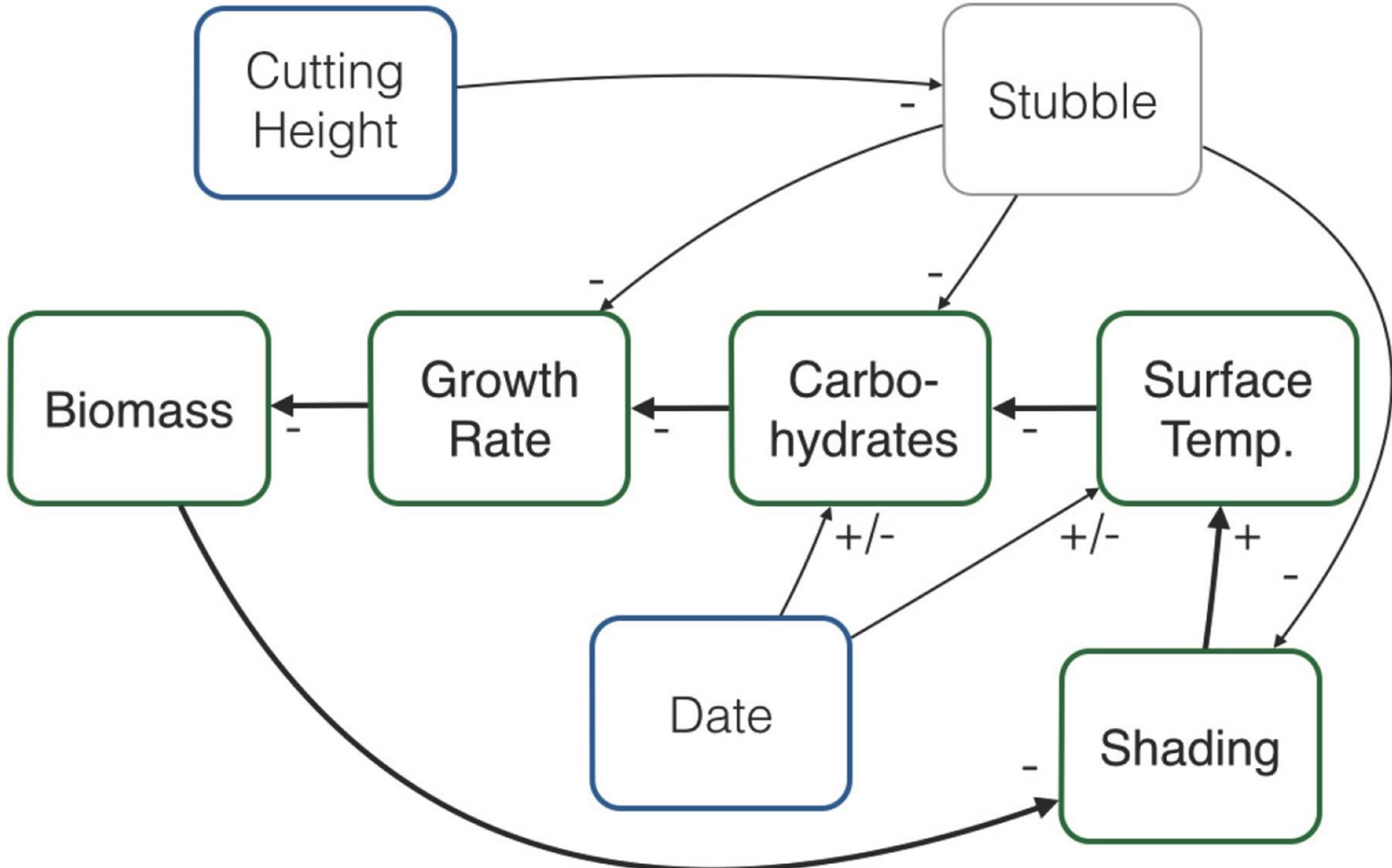


VIRGINIA AGRICULTURAL EXPERIMENT STATION
SHENANDOAH VALLEY AGRICULTURAL
RESEARCH AND EXTENSION CENTER
VIRGINIA TECH.

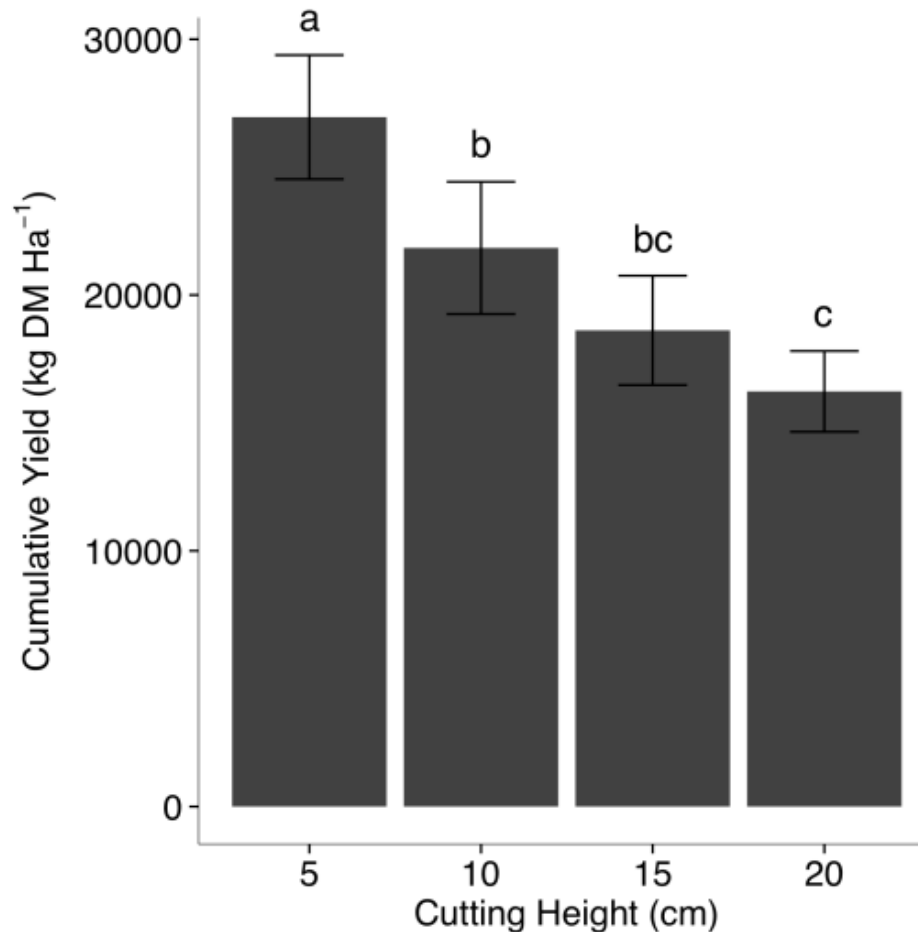




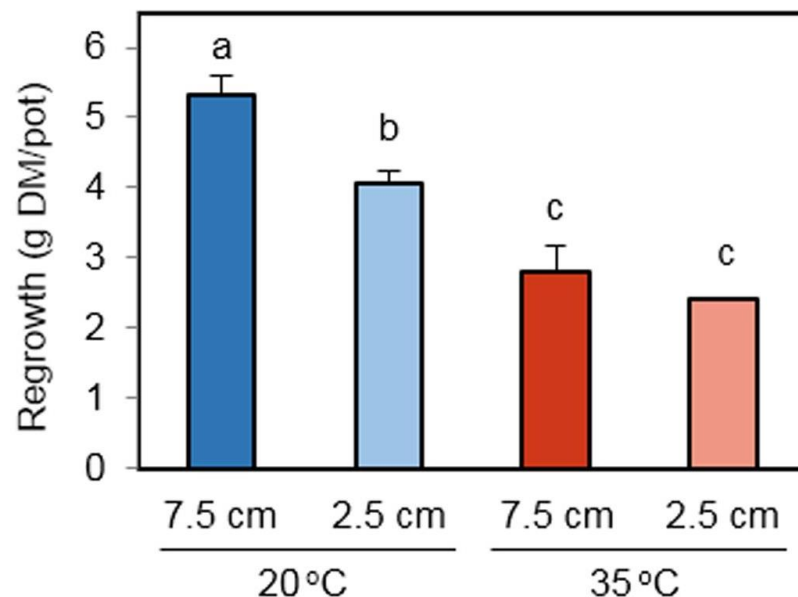
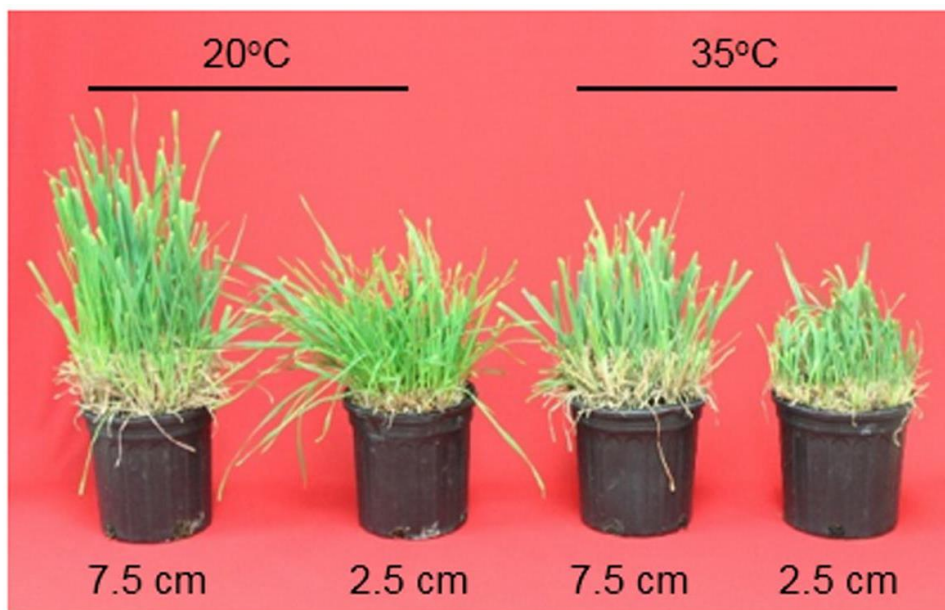
Reduced cutting height increases stress



Effect of cutting height on yield



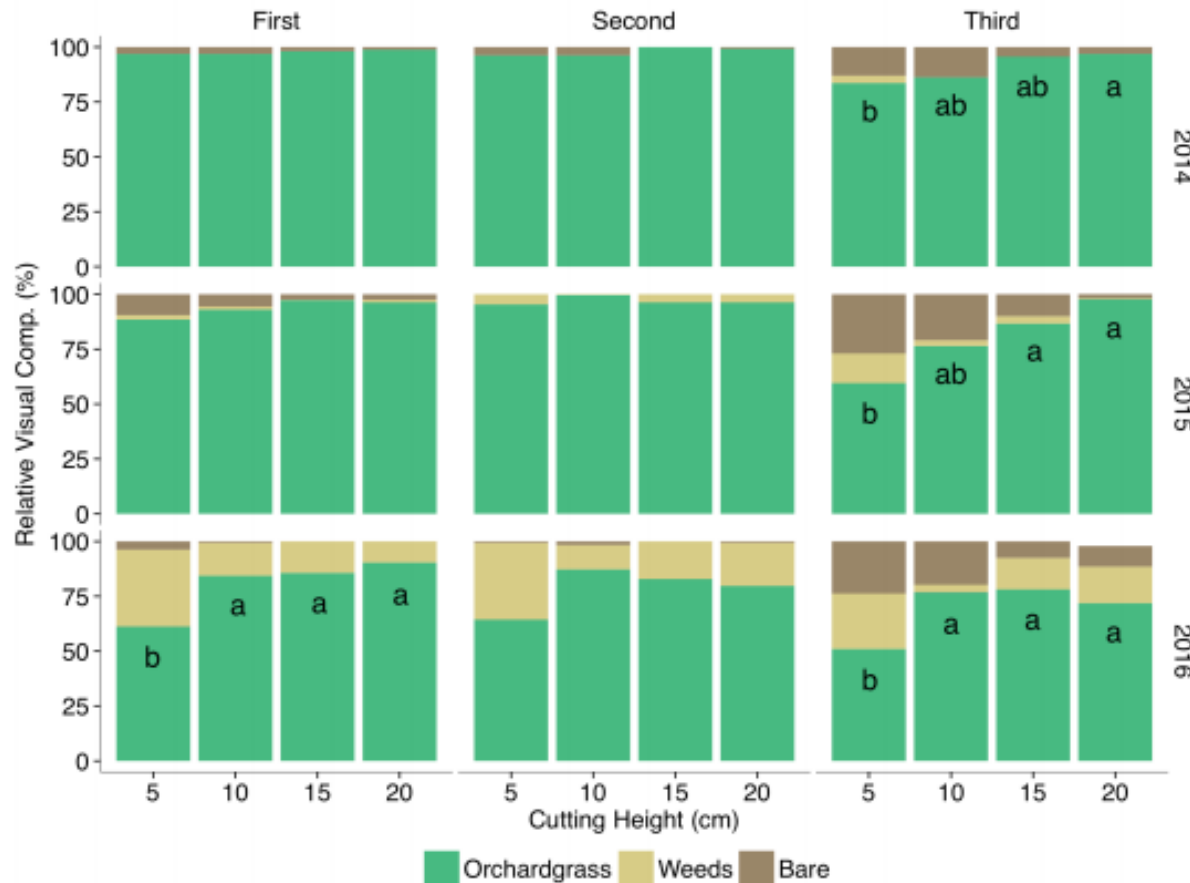
Effect of cutting height on regrowth



- 11 days after defoliation

- 7.5 cm = 3"
- 2.5 cm = 1"

Effect of cutting height on persistence



Thinking ahead – summer slump



Summer stockpiling

- Defer grazing on selected pastures: spring green-up to fall
- Utilize while fall-stockpiling



Summer stockpiled tall fescue

Study	TDN ----- % -----	CP -----	Forage availability ---- lb/ac ----
Booher, Benner, & Fiske. 2017. VCE CSES-201NP.	60	11.3	6840
Langford. 2020. Virginia Tech thesis.	>62	>9.8	5350-7140



Summer annuals



Photo: Stephan Wildeus

When do annuals make sense?

- When seed is discounted



When do annuals make sense?

- When seed is discounted
- During the pasture renovation process

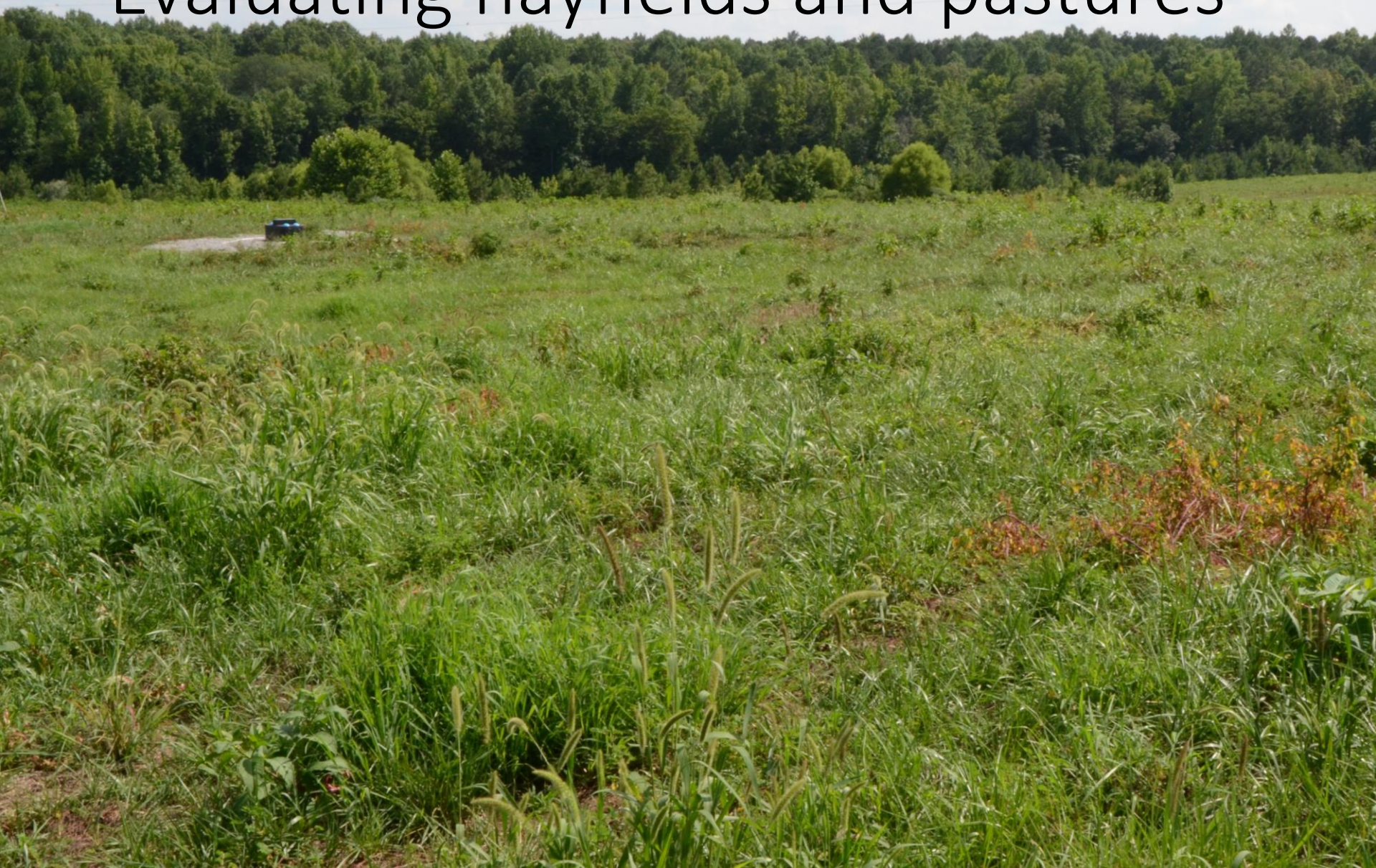


When do annuals make sense?

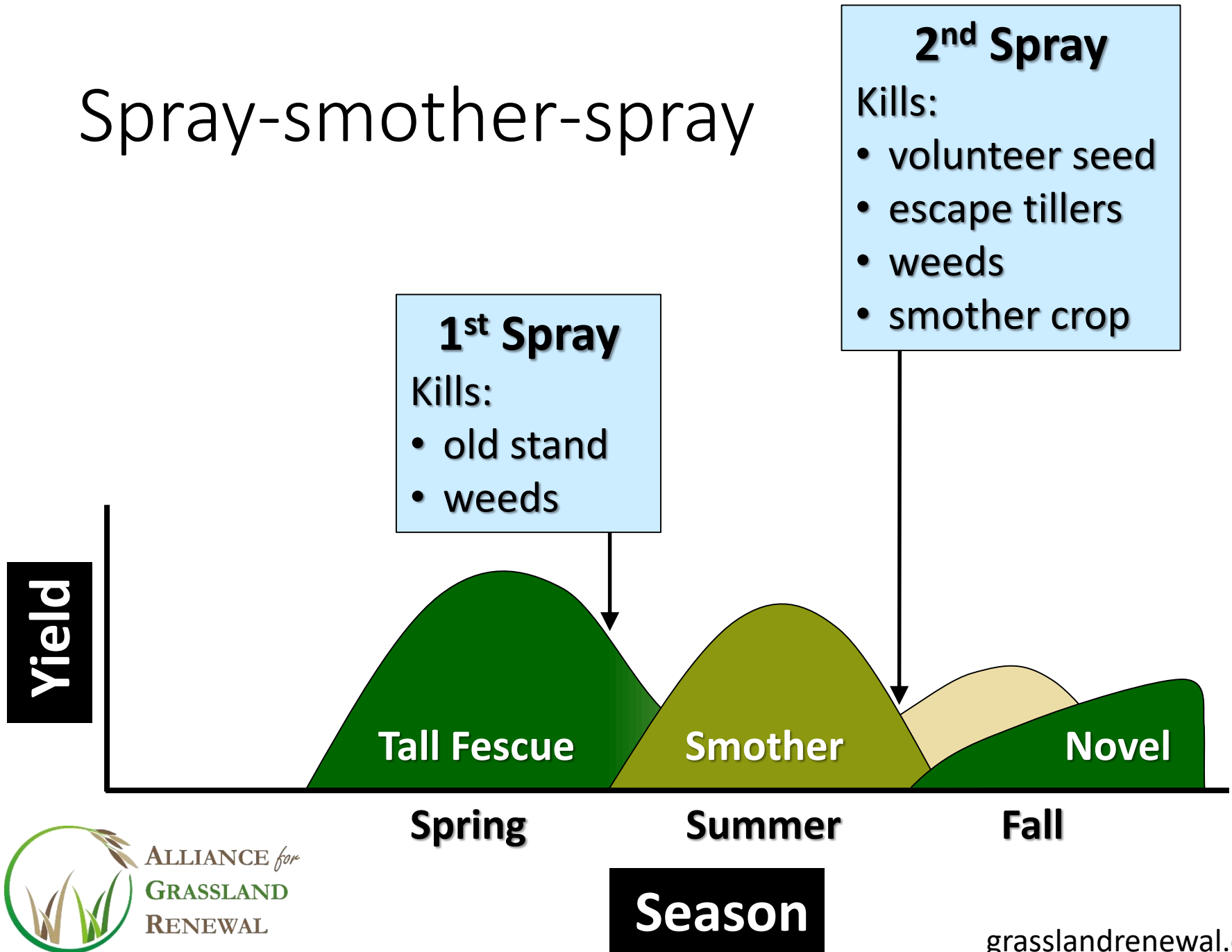
- When seed is discounted
- During the pasture renovation process
- When high quality or emergency feed is needed



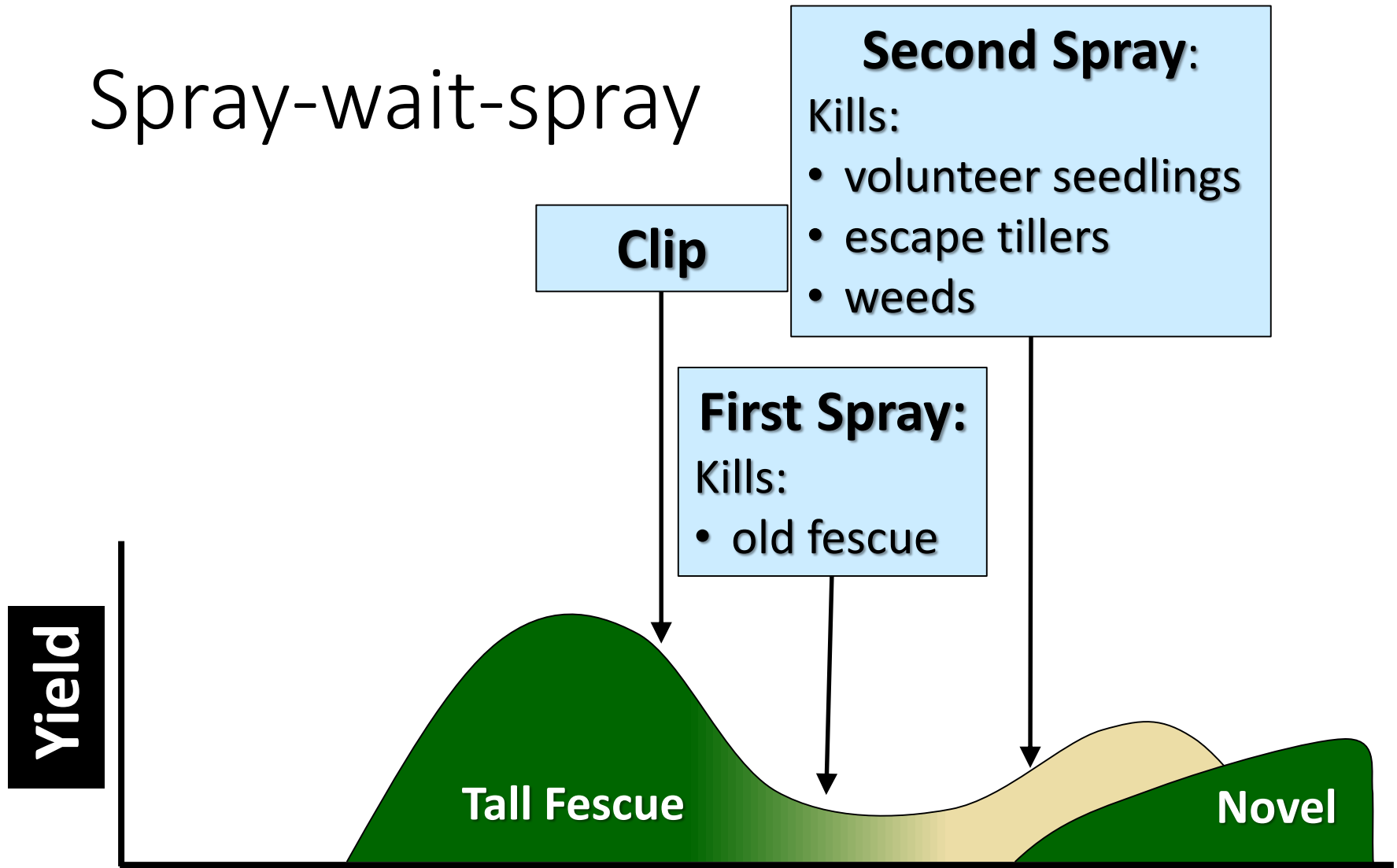
Evaluating hayfields and pastures



Spray-smother-spray



Spray-wait-spray



Clipping pastures

- Pinkeye control? No evidence
- Weed control? Takes repeated mowing
- Improve nutritive value? Useful for some
- Aesthetics? Depends on the beholder