

*Come Experience the Harvest!*



VIRGINIA TECH™

# 24<sup>TH</sup> ANNUAL HOKIE HARVEST SALE

FRIDAY, OCTOBER 26, 2018  
ANIMAL JUDGING PAVILION • SALE TIME 6:30 PM  
VIRGINIA TECH, BLACKSBURG, VIRGINIA



24<sup>th</sup> Annual

# HOKIE HARVEST SALE



Friday, **OCTOBER 26, 2018**

**Animal Judging Pavilion • Blacksburg, VA**

**Sale Time @ 6:30 pm EDT (Animal Judging Pavilion)**

**Virginia Tech, Blacksburg, Virginia**



**SALE DAY PHONES:**

**Dan Eversole (540) 641-0295**

**Chad Joines (540) 557-7263**

**Ken Brubaker (540) 908-5799**

**Sale Manager:**

2018 Livestock Merchandising Class

**Ringpersons:**

D.J. Dyer, Madison, VA	Senior	Ag Tech (in sale ring)
Jarod Faris, Abingdon, VA	Senior	Ag Tech (in sale ring)
Hunter Fariss, Lynchburg, VA	Senior	Ag Tech
Blake Haislip, Scottsville, VA	Senior	Ag Tech
Sarah Vest, Natural Bridge, VA	Junior	APSC

**Sale Clerk:**

Will Boyd, Chesapeake, VA      Junior      APSC

**Sale Consultant:**

Brubaker Sales and Marketing LLC

**Sale Advisor:**

Dr. Dan Eversole

**Auctioneer:**

Cattle: Col. Ken Brubaker, Brubaker Sales & Marketing LLC

**Cattle Photography & Video:**

High Road Photography, Dr. Dan Eversole, and Mr. Chad Joines  
2018 Clipping and Photography Committee

**Special Representatives:**

Dr. Timothy Sands	President, Virginia Tech
Dr. Alan Grant	Dean, College of Agriculture and Life Sciences
Kevin Fleenor	President, Virginia Angus Assn.
Roy Dean	President, Virginia Hereford Assn.
Chad Joines	President, Virginia Simmental Assn.
Jason Carter	Executive Director, Virginia Cattlemen's Assn.
Kim Nestor	Executive Director, West Virginia Cattlemen's Assn.

**Publications Representatives:**

Chris Jeffcoat	Regional Manager, American Angus Assn.
Tommy Coley	Eastern Region, American Hereford Assn.
Gordon Hodges	Eastern Region Trustee, American Simmental Assn.

**54 BEEF CATTLE**  
(Registered Purebreds and Commercial)

7 purebred spring pair splits

6 fall-calving purebred cows

14 spring-calving commercial cows  
and heifers

14 breeding-age bulls

**8 Quarter Horses (ONLINE SALE)**  
**STOCK and PERFORMANCE**  
**Yearlings, and Aged Horses**

Bidding Opens October 1<sup>ST</sup> and  
Closes 6PM October 26<sup>TH</sup>

Auction site:

<https://horsesales.cals.vt.edu/>



**KEN BRUBAKER**

5815 N. Valley Pike  
Harrisonburg, VA 22802  
540/908-5799  
ken@brubakersales.com  
www.brubakersales.com



**The Tradition Continues ...**

Dear Hokie Friends & Cattlemen,

Welcome to the 24th Hokie Harvest Sale. The tradition of offering superior graduates from the VT program continues in 2018.

This offering excels in production, performance and their respective breed rankings on multiple traits for each Lot offered. These cattle will vault any program, commercial or purebred, up to the next level. Buy with confidence as these cattle come to you backed by the University.

It has again been a great pleasure working with the VT students in the Livestock Merchandising Class. These are bright hard working and enthusiastic people. Our industry is in good hands, as these are our future producers and leaders.

If I can assist you with selection or further information, please do not hesitate to contact me. Hope to see you on October 26th.

Best regards,  
Ken Brubaker



August 29, 2018

Dear Friends:

It is with great pleasure that we invite you to our 24th Annual Hokie Harvest Sale, which is managed by the 2018 Livestock Merchandising Class and hosted by the Department of Animal and Poultry Sciences at Virginia Tech. This course has been a wonderful experience for us to work with such outstanding undergraduate students over the past 24 years, many of which have become industry leaders and prominent livestock producers.

The Hokie Harvest Sale has developed a significant reputation for selling high quality, university-owned livestock. Our equine faculty and staff here on campus are selling an excellent offering of Quarter Horses. Please join us as we showcase these well-bred horses from 2-5 PM on sale day. The online auction will be open for bidding on October 1st and will close at 6:00 PM on October 26th. This year's cattle offering features both purebred and commercial beef cattle. The Hokie Harvest is more than just a beef cattle or horse sale; it's an exciting, fun-filled day with quality, trouble-free livestock, outstanding students, great fellowship, and delicious food! Don't miss out on this opportunity to witness our future industry leaders in action.

This production sale is unique to the university and the Commonwealth of Virginia because it has been organized and managed by 84 Virginia Tech students in an experiential learning environment. Both two- and four-year students have gained "hands-on" experience in sale management, budgeting, advertising, cataloging, clerking, and livestock photography. Students have worked extremely hard in the planning and preparation of our production sale, which includes a live auction of 54 head of registered and commercial beef cattle and 8 horses being sold exclusively online at <https://horsesales.cals.vt.edu/>

Breeders of purebred Simmental, Angus, and Hereford cattle will be able to select AI-sired progeny from a cross-section of the VT Beef Cattle herd. Some of our very best females and bulls have been hand-picked stemming from elite donors that combine curve-bending EPDs, breed-changing genetics, and acceptable phenotype. Mature cows with proven production records and promising herd sires from predictable cow families will be sold. A strong set of pregnant commercial cows and heifers will also be offered. This is a great opportunity for any and all breeders to select high quality cattle to add to their herd. Cowbuyer LLC will again provide online bidding for the cattle sale if you are unable to attend, but you must register at [www.cowbuyer.com](http://www.cowbuyer.com) at least one hour before the sale in order to watch/bid online in real-time.

The Department of Animal and Poultry Sciences takes great pride in our university, our livestock, and especially our students. We encourage you to 'Come and Experience the Harvest' on Friday, October 26th and get to know this great group of future industry leaders. Funds generated from the Hokie Harvest will continue to provide funding critical to the survival of departmental programs. Many thanks to all of you for your past support and interest in our beef cattle and equine teaching programs. We are committed to making you a satisfied customer and are here to assist you in any way we can.

Dan Eversole, Director  
Beef Cattle Programs



Chad Joines, Director  
Beef Cattle Operations



## SALE HEADQUARTERS:

Beef Cattle Center and Alphin-Stuart Livestock Arena, 500 Plantation Road, Blacksburg, Virginia

### BEEF CATTLE:

Dr. Dan Eversole: (540) 231-4738 (o), (540) 641-0295 (cell),  
[deversol@vt.edu](mailto:deversol@vt.edu)

Mr. Chad Joines: (540) 231-6280 (barn office), (540) 557-7263 (cell),  
[cjoines@vt.edu](mailto:cjoines@vt.edu)

### HORSES:

Ms. Lisa Nulton: (585) 662-3102 (cell), [nultonl@vt.edu](mailto:nultonl@vt.edu)

Ms. Beth Sheely: (540) 223-2437 (cell), [beblackw@vt.edu](mailto:beblackw@vt.edu)

### LIABILITY:

All persons who attend the sale do so at their own risk. Neither Sale Management, Virginia Tech, nor any person connected with the sale assume any liability, legal or otherwise, for any accidents that may occur. Students and staff will be available and happy to answer questions about sale animals and present them for inspection. PLEASE DO NOT BRING DOGS ONTO SALE GROUNDS.

### INSPECTION:

Cattle are available for inspection at your convenience 10 days prior to the sale.

### MAIL OR PHONE BIDS:

Buyers unable to attend the sale may send their bids to Dr. Dan Eversole, Mr. Chad Joines, or the auctioneer, Mr. Ken Brubaker.

### TRANSPORTATION:

Blacksburg is easily reached via Interstate 81 and Rt. 460 Bypass. USAir, Delta, Northwest and United Airlines serve the Roanoke-Blacksburg Regional Airport.

### LODGING ACCOMMODATIONS:

Hyatt Place ..... (540) 552-7500  
Residence Inn by Marriott ..... (540) 750-4400  
Holiday Inn Express..... (540) 552-5005  
The Inn at Virginia Tech ..... (540) 231-8000

### SALE DAY ACTIVITIES:

2:00 – 5:00 pm.....Horse Sale Showcase in Alphin-Stuart Arena  
3:00 – 7:00 pm..... Buyer Registration in the Beef Cattle Barn  
4:30 – 6:30 pm..... Complimentary Barbecue Dinner  
in the Alphin-Stuart Arena  
6:30 pm .....Cattle Sale – Animal Judging Pavilion

### FOR MORE PICTURES, VIDEOS, AND DETAILS:

<https://www.apsc.vt.edu/facilities0/beef-center/beef-center-activities.html>

[www.cowbuyer.com](http://www.cowbuyer.com)

<https://horsesales.cals.vt.edu/>

### TERMS & CONDITIONS:

Cattle sell under the Standard Terms and Conditions as suggested by the American Hereford Association, American Angus Association, and the American Simmental Association. Cash or valid check will be accepted. All purchases are to be settled at the conclusion of the sale and will remain at the VT Beef Center until proper settlement is made.

### REGISTRATIONS & TRANSFER:

Registration certificates will be transferred to the buyer at the seller's expense. Buyers must provide full name and address for transfer. Association member codes would be helpful if you are a member of a purebred breed association; however, this is not required to purchase cattle. Animal transfers will be done after settlement.

### HEALTH REQUIREMENTS:

1. All cattle for sale will meet the health requirements of the Commonwealth of Virginia and appropriate health papers will be furnished for interstate shipment. Every female (4-12 mo.) has been calf-hood vaccinated for Brucellosis. All cattle are from a Brucellosis certified-free herd (No. 1498) and Tuberculosis accredited-free herd (No. 2174)
2. If sale cattle are returned to the seller for an adjustment, they must meet health requirements of the Commonwealth of Virginia.
3. Yearling bulls have undergone a breeding soundness examination (BSE) and are considered satisfactory breeders as defined by the Society of Theriogenology. Buyers will be given a copy of the BSE results.

### BREEDING GUARANTEE:

Bulls are guaranteed to be breeders (defined as the ability to settle healthy cows by the time they are 14 months of age) with exception of:

- a. Injury or disease occurring to the animal after time of purchase.
- b. Gross negligence or willful misconduct on the part of the purchaser.

### HERD HEALTH:

All pregnant females were given a pre-breeding vaccine which consisted of a modified-live virus IBR-PI3, BVD, BRSV, and a 5-way Lepto bacterin. Any questions concerning general herd health can be directed to Dr. Terry Swecker, College of Veterinary Medicine (0442), Virginia Tech, Blacksburg, VA 24061, 540/231-7375.

### ANNOUNCEMENTS:

Announcements from the auction block will take precedence over printed material in this sale book. Virginia Tech reserves the right to withdraw any sale lot from the sale that does not meet their specifications prior to the sale.

**EPDs represented in this sale book were current at the time requested for the layout and printing of this sale book. EPDs are recalculated throughout the year by the respective breed associations, which mean the figures represented in this book may change for these animals in the future.**



Registration is required.  
Please register at least one (1)  
hour prior to sale time at  
[www.cowbuyer.com](http://www.cowbuyer.com)

## 1 VPI MISS AMBUSH 6D5 ET

Calved: 01/30/2016		Cow +18493179		Tattoo: 6D5		\$W
*# Connealy Consensus 7229		*# Connealy Consensus				+50.18
<b>Connealy Black Granite</b>		Blue Lilly of Conanga 16		MARB		\$F
*17028963	# Eura Elga of Conanga 9109	#+ S A V Bismarck 5682 [RDF]		+ .78		+66.37
#* A A R Ten X 7008 S A		Eura Cal of Conanga 56B		RE		\$G
<b>VPI MissAmbush 3A1</b>		*# Mytty In Focus [RDF]		+ .75		+48.81
17536837	+ VPI Miss Ambush 1Y3	# A A R Lady Kelton 5551		FAT		\$B
		#+ B/R Ambush 28		- .010		+132.30
		G A R Objective 936				
CED	BW	WW	YW	Milk		
+11 .24	+1.2 .26	+58 .23	+102 .22	+21 .20		

- ▶ **Sells examined safe to J&J Weigh Up 294, due 2/1/19.**
- ▶ This 2-year-old is a product of the VT ET program.
- ▶ She weaned her first heifer calf, Lot 1A, at an impressive 584# to ratio 95
- ▶ She is built from 7 Pathfinder Sires and Dams found in her 3-generation pedigree.
- ▶ She ranks among the top 10% of active Dams on multiple traits that include CED, \$G, and \$YG.



VPI MISS AMBUSH 6D5 ET - Lot 1

## 1A BARTSTOW BANKROLL B73

Calved: 01/14/2018		Cow 19166794		Tattoo: 8F1		\$W
*# Barstow Cash		*# Sitz Dash 10277				+45.43
<b>Barstow Bankroll B73</b> [RDF]		Barstow Queen W16		MARB		\$F
*18036327	Barstow Miss Dianna Z25	# CAR Efficient 534		+ .53		+84.48
* Connealy Black Granite		# Barstow Miss Dianna X128		RE		\$G
<b>VPI Miss Ambush 6D5 ET</b>		*# Connealy Consensus 7229		+ .71		+37.84
+18493179	VPI MissAmbush 3A1	# Eura Elga of Conanga 9109		FAT		\$B
		#* A A R Ten X 7008 S A		+ .002		+148.63
		+ VPI Miss Ambush 1Y3				
CED	BW	WW	YW	Milk		
+12 .25	+0 .32	+59 .21	+114 .20	+21 .10		

- ▶ **Sells Open.**
- ▶ This heifer by the popular "Bankroll" offers the discriminating breeder calving-ease and growth.
- ▶ She ranks among the top 10% of non-parent females on CED and \$F.
- ▶ 67# BW and weaned off impressively at 584# from a first- calf heifer.



BARTSTOW BANKROLL B73 - Sire of Lot 1A

## 2 VPI 2Z18 RITA 6D1 ET

Calved: 01/24/2016		Cow +*18481981		Tattoo: 6D1		\$W
#+ G A R Ingenuity		#+ G A R New Design 5050				+74.54
<b>V A R Index 3282</b>		G A R Objective 1067		MARB		\$F
*17513381	+* Sandpoint Blackbird 8809	*# Connealy Onward		+ .50		+80.77
#+* G A R Prophet		+ Riverbend Blackbird 4301		RE		\$G
<b>Vpi 7T39 Rita 2Z18</b>		# C R A Bextor 872 5205 608		+ .85		+37.47
17338644	+ PI Rita 317 7T39 ET	+ G A R Objective 1885		FAT		\$B
		#+ G A R Predestined		+ .010		+144.11
		+ HHF Alli Rita 704 317				
CED	BW	WW	YW	Milk		
+9 .35	+ .5 .51	+69 .44	+116 .40	+28 .30		

- ▶ **Sells examined safe to J&J Weigh Up 294, due 2/1/19.**
- ▶ This a powerful and productive 2-year-old product of the VT ET program that weaned her first heifer calf, Lot 2A, at 666# to ratio 108.
- ▶ She traces to the long-time VT Donor, HHF Alli Rita 704 317, who was valued at \$10,000 and produced thousands of dollars in progeny sales.
- ▶ She ranks among the elite active Dams in the breed at 2% on WWEPD, 3% on REEPD, 4% on YWEPD, 5% on \$F, and 10% on \$B.



VPI 2Z18 RITA 6D1 ET - Lot 2

## 2A DEER VALLEY OLD HICKORY

Calved: 02/20/2018		Cow 19166798		Tattoo: 8F7		\$W
* Plattermere Weigh Up K360		# Sitz Upward 307R				+70.74
<b>Deer Valley Old Hickory</b> [RDF]		# Barbara of Plattermere 337		MARB		\$F
*17873666	+* Deer Valley Rita 1126	#+ S A V Bismarck 5682 [RDF]		+ .52		+85.92
+* V A R Index 3282		* G A R Objective 2345		RE		\$G
<b>VPI 2Z18 Rita 6D1 ET</b>		#+ G A R Ingenuity		+ .70		+37.69
+*18481981	Vpi 7T39 Rita 2Z18	+* Sandpoint Blackbird 8809		FAT		\$B
		#+* G A R Prophet		- .004		+150.31
		+ VPI Rita 317 7T39 ET				
CED	BW	WW	YW	Milk		
+8 .25	+1.3 .31	+70 .20	+118 .19	+28 .09		

- ▶ **Sells Open.**
- ▶ This is a special heifer that blends calving-ease and high-growth, giving her the credentials to mature into a highly valued brood cow.
- ▶ She had a 70# BW and carries a BWEPD of +1.3, giving her the genetic propensity for low-birth weight progeny.
- ▶ She ranks among the elite 5% of non-parent females on WWEPD and top 10% on YWEPD and \$F.



DEER VALLEY OLD HICKORY - Sire of Lot 2A

## 3 VPI LADY BURGESS 5C29

Calved: 09/19/2015	Cow 18239546	Tattoo: 5C29	\$W	+75.30
#* A A R Ten X 7008 S A #* Mytty In Focus R0FJ # A A R Lady Kelton 5551 # Sitz Upward 307R # G A R Objective 2345 Connealy Tobin Becca Gala of Conanga 8281 #* S S Objective T510 OT26 + VT 1407 New Design B4			MARB	\$F
#* Deer Valley All In [RDF] *17307074 +* Deer Valley Rita 0274 #* Connealy Confidence 0100			+ .60	+100.35
#* Deer Valley All In [RDF] *17307074 +* Deer Valley Rita 0274 #* Connealy Confidence 0100			RE	\$G
#* Deer Valley All In [RDF] *17307074 +* Deer Valley Rita 0274 #* Connealy Confidence 0100			+ .51	+35.70
#* Deer Valley All In [RDF] *17307074 +* Deer Valley Rita 0274 #* Connealy Confidence 0100			FAT	\$B
#* Deer Valley All In [RDF] *17307074 +* Deer Valley Rita 0274 #* Connealy Confidence 0100			+ .028	+150.36
CED	BW	WW	YW	Milk
+12 .39	+8 .55	+74 .47	+132 .43	+26 .34

- ▶ **Sells examined safe to CTS Remedy 1T01, due 1/31/19.**
- ▶ This young cow is a product of the Select Sires roster member "All In" and traces to a former VT Donor, "B4", who sold in the 2007 Hokie Harvest Sale at \$40,000.
- ▶ This cow is hard to part with, as she weaned her first heifer calf, Lot 3A, at 700# to ratio 113.
- ▶ She is an elite cow ranking among active Dams at 1% for BWEPPD, YWEPPD, and \$W.
- ▶ She blends growth and maternal with a top 10% ranking on CED and \$B.



VPI LADY BURGESS 5C29 - Lot 3

## 3A HA COWBOY UP 5405

Calved: 01/31/2018	Cow 18286467	Tattoo: 8F5	\$W	+58.20
* HA Outside 3008 #* HA Blackcap Lady 1602 #* HA Ever Lady 1575 # Sitz Upward 307R HA Blackcap Lady 5515 #* A A R Ten X 7008 S A +* Deer Valley Rita 0274 #* Connealy Confidence 0100 + VPI Objective 8U40			MARB	\$F
#* HA Outside 3008 #* HA Blackcap Lady 1602 #* HA Ever Lady 1575 # Sitz Upward 307R HA Blackcap Lady 5515 #* A A R Ten X 7008 S A +* Deer Valley Rita 0274 #* Connealy Confidence 0100 + VPI Objective 8U40			+ .39	+111.48
#* HA Outside 3008 #* HA Blackcap Lady 1602 #* HA Ever Lady 1575 # Sitz Upward 307R HA Blackcap Lady 5515 #* A A R Ten X 7008 S A +* Deer Valley Rita 0274 #* Connealy Confidence 0100 + VPI Objective 8U40			RE	\$G
#* HA Outside 3008 #* HA Blackcap Lady 1602 #* HA Ever Lady 1575 # Sitz Upward 307R HA Blackcap Lady 5515 #* A A R Ten X 7008 S A +* Deer Valley Rita 0274 #* Connealy Confidence 0100 + VPI Objective 8U40			+ .59	+28.04
#* HA Outside 3008 #* HA Blackcap Lady 1602 #* HA Ever Lady 1575 # Sitz Upward 307R HA Blackcap Lady 5515 #* A A R Ten X 7008 S A +* Deer Valley Rita 0274 #* Connealy Confidence 0100 + VPI Objective 8U40			FAT	\$B
#* HA Outside 3008 #* HA Blackcap Lady 1602 #* HA Ever Lady 1575 # Sitz Upward 307R HA Blackcap Lady 5515 #* A A R Ten X 7008 S A +* Deer Valley Rita 0274 #* Connealy Confidence 0100 + VPI Objective 8U40			+ .009	+166.78
CED	BW	WW	YW	Milk
+12 .26	+4 .33	+74 .23	+134 .22	+17 .08

- ▶ **Sells Open.**
- ▶ This heifer will build a program, blending individual performance with breed rank.
- ▶ She combines a 61# BW with a 700# WW to ratio an impressive 113.
- ▶ She is sired by the very popular Origen sire, HA Cowboy Up 5405.
- ▶ Heifers like these are hard to find. She is in the elite 1% on \$F and 2% on WWEPPD and YWEPPD.
- ▶ She blends genetic growth with carcass and calving-ease, as she ranks at 4% on CW, 5% on \$B, and 10% on CED.



HA COWBOY UP 5405 - Sire of Lot 3A



## 4 VPI BLACK PRINCESS D657

Calved: 01/26/2016 Cow 3123955 Tattoo: D657

A A R TEN X 7008 S A  
**DEER VALLEY ALL IN**  
 2844065 DEER VALLEY RITA 0274  
 MCM TOP GRADE 018X  
**VPI BLACK PRINCESS B464**  
 2868486 VPI BLACK PRINCESS R570

MYTTY IN FOCUS  
 A A R LADY KELTON 5551  
 SITZ UPWARD 307R  
 G A R OBJECTIVE 2345  
 MR NLC UPGRADE U8676  
 MCM 513R  
 KSU VENOM 101M  
 VPI BLACK PRINCESS N361

MARB	0.64
RE	0.67
FAT	-0.040
API	155.1
TI	87.6

CED	BW	WW	YW	Milk	
12.5	.26	0.9 .34	78.9 .30	129.5 .32	22.5 .22



VPI BLACK PRINCESS D657 - Lot 4

- ▶ **Sells examined safe to TJ Main Event 503B, due 3/10/19.**
- ▶ **½ SM ½ AN Homozygous Black & Polled.**
- ▶ A 2-year-old SimAngus heifer that blends calving-ease and superior individual performance.
- ▶ She had a 77# BW, 689# WW to ratio 103, and a 1074# YW to ratio 109. She offers profitable carcass quality with an IMF of 7.94 to ratio 128 and a 11.56 RE to ratio 99.
- ▶ This productive heifer weaned her first heifer calf, Lot 4A, at 787# to ratio 114.
- ▶ She ranks in the elite 3% on YWEPD and 5% on MARB.

## 4A VPI BLACK PRINCESS F854

Calved: 01/24/2018 Cow 3428461 Tattoo: F854

HOOK'S YELLOWSTONE 97Y  
**LRS ELEVATE 213B**  
 2842534 LRS MS DUAL FOCUS 213Z  
 DEER VALLEY ALL IN  
**VPI BLACK PRINCESS D657**  
 3123955 VPI BLACK PRINCESS B464

HOOKS TAURUS 24T  
 HOOKS SHEYENNE 77S  
 TNT DUAL FOCUS T249  
 LRS MS DEW TIME 971W  
 A A R TEN X 7008 S A  
 DEER VALLEY RITA 0274  
 MCM TOP GRADE 018X  
 VPI BLACK PRINCESS R570

MARB	0.33
RE	0.90
FAT	-0.063
API	143.2
TI	79.6

CED	BW	WW	YW	Milk	
14.2	.24	0.1 .33	75.3 .26	119.6 .25	22.6 .17



LRS ELEVATE 213B - Sire of Lot 4A

- ▶ **Sells Open**
- ▶ **¾ SM ¼ AN, Black & Polled.**
- ▶ She is a high performing SimAngus heifer that had a 67# BW and weaned at 787# to ratio 114.
- ▶ She ranks in the top 10% on WWEPD and 15% on YWEPD.

## 5 VPI SAVANNAH C563 ET

Calved: 02/03/2015 Cow 2991640 Tattoo: C563

O C C LEGEND 616L  
**B C LOOKOUT 7024**  
 2431243 GIBBET HILL MIGNONNE E37  
 CNS DREAM ON L186  
**EBS SHESA ANDRIAS DREAM**  
 2275886 TRIPLEC SHESAVANNAH K137

O C C EMBLAZON 854E  
 O C C BLACKBIRD 632J  
 PAPA EQUATOR 2928  
 GIBBET HILL MIGNONNE TR 29  
 NICHOLS LEGACY G151  
 CNS SHEEZA DREAM K107W  
 HC POWER DRIVE 88H  
 G&L SAVANNAH 607C

MARB	0.24
RE	0.65
FAT	-0.025
API	124.7
TI	66.1

CED	BW	WW	YW	Milk	
13.5	.30	0.5 .33	59.9 .31	86.2 .32	22.8 .32



BC LOOKOUT 7024 - Sire of Lot 5

- ▶ **Sells examined safe to CCR Wide Range 9005A, due 2/22/19**
- ▶ **½ SM ½ AN. Homozygous Black & Polled**
- ▶ She is from the VT ET program and a daughter of donor, EBS SHESA Andrias Dream, who has compiled a progeny WR of 7@105.
- ▶ This is a 3-year-old SimAngus cow with a progeny WR 2@108 and YR 1@105.
- ▶ She weaned her 2018 herd sire prospect, Lot 5A, at 838# to ratio 116.

## 5A VPI SPARTAN F869

Calved: 02/21/2018 Bull 3428451 Tattoo: F869

CCR CATALYST 7035W  
**CCR SPARTAN 9124A**  
 2725682 CCR MS APPLE 9332W  
 B C LOOKOUT 7024  
**VPI SAVANNAH C563 ET**  
 2991640 EBS SHESA ANDRIAS DREAM

S A V FINAL ANSWER 0035  
 CCRMS1043OPREC1023 7035  
 HTP SVF IN DEW TIME  
 CCR 992F FULLHOUSE 3249N  
 O C C LEGEND 616L  
 GIBBET HILL MIGNONNE E37  
 CNS DREAM ON L186  
 TRIPLEC SHESAVANNAH K137

MARB	0.41
RE	0.47
FAT	-0.013
API	136.8
TI	73.3

CED	BW	WW	YW	Milk	
13.0	.22	0.5 .28	66.7 .24	95.2 .24	18.0 .21



CCR SPARTAN 9124A - Sire of Lot 5A

- ▶ **Herd Sire Prospect**
- ▶ **½ SM ½ AN**
- ▶ **Homozygous Black & Polled**
- ▶ 81# BW and an impressive WW of 838# to ratio 116.
- ▶ Here is a prospect with considerable potential to mature into your next herd sire to add pounds to your calf crop.
- ▶ He will further the maternal quality of your herd as a grandson of donor, EBS SHESA Andrias Dream.

## 6 VPI LADY OF CLASS D602 (DLF,HYF,IEF)

Calved: 02/04/2016 Cow P43768042 Tattoo: D602

SCHU-LAR ON TARGET 225 (SOD,CHB,DLF,HYF,IEF) SCHU-LAR 5N OF 9L 3008 (CHB,SOD,DLF,HYF,IEF)  
**KCF BENNETT ENCORE Z311 ET** (DLF,HYF,IEF) SCHU-LAR 208 OF 1H 121 ET (DOD)  
P42669011 KCF MISS REVOLUTION X338 ET (DLF,HYF,IEF) MSU TCF REVOLUTION 4R (SOD,CHB,DLF,HYF,IEF)  
UPS DOMINO 3027 (SOD,DLF,HYF,IEF) CL 1 DOMINO 9126J 1ET (SOD,CHB,DLF,IEF)  
**VPI LADY OF CLASS Z222** UPS MISS DIAMOND 1353 (DLF,HYF,IEF)  
P43324708 DR LADY OF CLASS 10H S06 DR WORLD CLASS 517 10H (SOD,DLF,HYF,IEF)  
DR WILLOW OAK 65H N05 ET

<b>MARB</b>	<b>BMI\$</b>
<b>+0.49</b>	<b>+\$412</b>
<b>RE</b>	<b>BIIS</b>
<b>+0.23</b>	<b>+\$516</b>
<b>FAT</b>	<b>CHBS</b>
<b>+0.055</b>	<b>+\$93</b>

<b>CED</b>	<b>BW</b>	<b>WW</b>	<b>YW</b>	<b>Milk</b>
<b>+6.7</b>	<b>.33</b>	<b>+1.6</b>	<b>.44</b>	<b>+59</b>
<b>.39</b>	<b>+88</b>	<b>.39</b>	<b>+34</b>	<b>.16</b>

- ▶ **Sells examined safe to CRR About Time 743, due 2/22/19.**
- ▶ This heterozygous, polled 2-year-old has proven her value as a herd matron with her first calf.
- ▶ She hails from the highly regarded "Lady of Class" cow family at VT.



KCF BENNETT ENCORE Z311 ET - Sire of Lot 6

## 6A VPI LADY OF CLASS F806

Calved: 02/17/2018 Cow P43942555 Tattoo: F806

THM DURANGO 4037 (SOD,DLF,HYF,IEF) CS BOOMER 29F (SOD,CHB,DLF,HYF,IEF)  
**NJW 765 4037 DURANGO SPIRIT 174X** (DLF,HYF,IEF) THM 7085 VICTRA 9036 (DLF,HYF,IEF)  
P43092746 NJW 55N STARDUST 76S (DLF,HYF,IEF) NJW BW TRAILDUST 161L  
KCF BENNETT ENCORE Z311 ET (DLF,HYF,IEF) SCHU-LAR ON TARGET 225 (SOD,CHB,DLF,HYF,IEF)  
**VPI LADY OF CLASS D602** (DLF,HYF,IEF) KCF MISS REVOLUTION X338 ET (DLF,HYF,IEF)  
P43768042 VPI LADY OF CLASS Z222 UPS DOMINO 3027 (SOD,DLF,HYF,IEF)  
DR LADY OF CLASS 10H S06

<b>MARB</b>	<b>BMI\$</b>
<b>+0.18</b>	<b>+\$355</b>
<b>RE</b>	<b>BIIS</b>
<b>+0.22</b>	<b>+\$430</b>
<b>FAT</b>	<b>CHBS</b>
<b>+0.045</b>	<b>+\$88</b>

<b>CED</b>	<b>BW</b>	<b>WW</b>	<b>YW</b>	<b>Milk</b>
<b>+8.9</b>	<b>.26</b>	<b>+0.6</b>	<b>.34</b>	<b>+52</b>
<b>.24</b>	<b>+79</b>	<b>.23</b>	<b>+29</b>	<b>.12</b>

- ▶ **Sells Open**
- ▶ She represents another generation from the "Lady of Class" cow family.
- ▶ 80# BW



## 7 VPI STYLISH LADY B403 (DLF,HYF,IEF)

Calved: 02/13/2014 Cow P43501406 Tattoo: B403

FELTONS SOUNDER 957 (SOD,DLF,HYF,IEF) FELTONS LUTE 680 (DLF,HYF,IEF)  
**EFBEEF FOREMOST U208** (DLF,HYF,IEF) FELTONS C9  
P42896690 EFBEEF G824 KATE S610 ET EF 821C MR CARCASS G824 (CHB)  
DR WORLD CLASS 517 10H (SOD,DLF,HYF,IEF) FELTONS KATE P38 (DOD,DLF,HYF,IEF)  
**VPI STYLISH LADY W907** FELTONS 517 (SOD,HYF)  
P435015626 VPI STYLISH LADY T704 VPI MARATHON LADY 0081  
PW VICTOR BOOMER P606 (SOD,DLF,HYF,IEF)  
DR EASY LADY P16

<b>MARB</b>	<b>BMI\$</b>
<b>+0.21</b>	<b>+\$408</b>
<b>RE</b>	<b>BIIS</b>
<b>+0.35</b>	<b>+\$497</b>
<b>FAT</b>	<b>CHBS</b>
<b>+0.025</b>	<b>+\$105</b>

<b>CED</b>	<b>BW</b>	<b>WW</b>	<b>YW</b>	<b>Milk</b>
<b>-1.2</b>	<b>.33</b>	<b>+4.8</b>	<b>.44</b>	<b>+64</b>
<b>.39</b>	<b>+99</b>	<b>.39</b>	<b>+26</b>	<b>.24</b>

- ▶ **Sells examined safe to KT Small Town Kid 5051, due 2/1/19**
- ▶ This homozygous, polled female is certainly donor quality.
- ▶ She has a progeny WR 2@101, progeny RE ratio 1@101, and IMF 1@104.
- ▶ She is in the prime of her productive years and will afford the most discriminating breeder an opportunity to build a strong program.



VPI STYLISH LADY B403 - Lot 7

## 7A VPI STYLISH LADY F804

Calved: 01/26/2018 Cow P43933147 Tattoo: F804

NJW 735 W18 HOMETOWN 10Y ET (CHB,DLF,HYF,IEF) SHF WONDER M326 W18 ET (CHB,DLF,HYF,IEF)  
**KT SMALL TOWN KID 5051** (DLF,HYF,IEF) NJW P606 72N DAYDREAM 73S (DLF,HYF,IEF)  
P43621413 KT MS 0124 TIMES A WASTIN 2086 (DOD,DLF,HYF,IEF) RST TIMES A WASTIN 0124 (CHB,DLF,HYF,IEF)  
EFBEEF FOREMOST U208 (DLF,HYF,IEF) FELTONS SOUNDER 957 (SOD,DLF,HYF,IEF)  
**VPI STYLISH LADY B403** (DLF,HYF,IEF) EFBEEF G824 KATE S610 ET  
P43501406 VPI STYLISH LADY W907 DR WORLD CLASS 517 10H (SOD,DLF,HYF,IEF)  
VPI STYLISH LADY T704

<b>MARB</b>	<b>BMI\$</b>
<b>+0.35</b>	<b>+\$398</b>
<b>RE</b>	<b>BIIS</b>
<b>+0.47</b>	<b>+\$495</b>
<b>FAT</b>	<b>CHBS</b>
<b>+0.044</b>	<b>+\$103</b>

<b>CED</b>	<b>BW</b>	<b>WW</b>	<b>YW</b>	<b>Milk</b>
<b>+7.3</b>	<b>.25</b>	<b>+1.2</b>	<b>.34</b>	<b>+64</b>
<b>.24</b>	<b>+101</b>	<b>.25</b>	<b>+30</b>	<b>.12</b>

- ▶ **Sells Open**
- ▶ Low birth weight female with a 76# actual BW.
- ▶ She blends some of the elite and most popular Hereford gene pools in the breed today.
- ▶ She is destined to mature into a valued herd matron.



KT SMALL TOWN KID 5051 - Sire of Lots 7A, 13A, & 25



**8 VPI 3A23 RITA 5C21** DDC IBDK

Calved: 09/01/2015		Cow 18239545		Tattoo: 5C21		SW	
#* A A R Ten X 7008 S A		#* Mytty In Focus (RDF)		MARB		+81.90	
Deer Valley All In (RDF)		# A A R Lady Kelton 5551		RE		+123.34	
*17307074 +* Deer Valley Rita 0274		# Sitz Upward 307R		FAT		+48.82	
#+ G A R Ingenuity		# G A R Objective 2345		MARB		+88	
Vpi 7T39 Rita 3a23		#+ G A R New Design 5050		RE		+93	
17622464 + VPI Rita 317 7T39 ET		G A R Objective 1067		FAT		+182.71	
		#* G A R Predestined		CED		+12	
		+ HHF Alli Rita 704 317		BW		+1.6	
				WW		.55	
				YW		+152	
				Milk		+29	
						.35	

- ▶ Sells with her 9/26/18 heifer calf, Lot 8A, by Spring Grove Paygrade 5064.
- ▶ This female excels in individual performance and breed rank.
- ▶ She blends an actual 70# BW with a WW of 662# to ratio 108, and a YW of 966# to ratio 106.
- ▶ Her genetic profile places her in the elite 1% on WWEPD, YWEPD, CW, \$F, and \$B.
- ▶ She ranks in the top 2% on REEPD and 10% on CED.
- ▶ She traces to the \$10,000 valued VT Donor, HHF Alli Rita 704 317.
- ▶ She is the Dam of the Lot 20 bull.



DEER VALLEY ALL IN - Sire of Lots 3, 4, &amp; 8

**9 VPI BLACKBIRD 5C32** IBDK

Calved: 10/10/2015		Cow 18262008		Tattoo: 5C32		SW	
#* EXAR Upshot 0562B		# Sitz Upward 307R		MARB		+52.89	
EXAR Denver 2002B		#+ EXAR Barbara T020		RE		+55.26	
*17160560 + Exar Royal Lass 1067		# EXAR 263C		FAT		+42.92	
# S S Objective T510 0T26		BR Royal Lass 19-132		CED		+8	
VPI Blackbird 6S48		# S S Traveler 6807 T510		BW		+2.1	
15613613 + VPI Blackbird 4P23		S S Miss Rita R011 7R8		WW		.56	
		#+ GDAR SVF Traveler 234D		YW		+102	
		+ V P I Blackbird 8H55		Milk		+25	
						.36	

- ▶ Will calve by sale time to ICC Pay Raise 4886.
- ▶ She is a direct daughter of the very popular EXAR Denver who sold at \$340,000 for 1/3 interest.
- ▶ She is a balanced trait female that blends adequate growth and maternal to wean pounds-heavy calves.
- ▶ Her top-performing son sells as Lot 16. He weaned at 669# to ratio 103.
- ▶ She ranks among active Dams in the top 15% on YWEPD.



EXAR DENVER 2002B - Sire of Lot 9

**10 VPI BLACKBIRD 4B25** Angus GS™

Calved: 10/07/2014		Cow 18051683		Tattoo: 4B25		SW	
#* Mytty In Focus (RDF)		# S A F Focus of E R		MARB		+49.76	
A A R Ten X 7008 S A		Mytty Countess 906		RE		+62.43	
*15719841 # A A R Lady Kelton 5551		S A V Adaptor 2213		FAT		+37.88	
#+ Connealy Contrast		+ H S A F Lady Kelton 504B		CED		+8	
VPI Blackbird 2Z22		# Connealy Danny Boy		BW		+2	
17338648 VPI Blackbird 6S48		# Doris of Conanga 669		WW		.56	
		#* S S Objective T510 0T26		YW		+100	
		+ VPI Blackbird 4P23		Milk		+30	
						.36	

- ▶ Sells with her 8/21/18 heifer calf, Lot 10A, by 3F Epic 4631.
- ▶ This very productive cow is a direct daughter of AAR Ten X 7008 SA, who was #1 in breed registrations in 2015 and 2016.
- ▶ She posts a progeny WR 2@107, YR 2@106, and IMF ratio of 110 on 2 head.
- ▶ The heifer calf by "Epic" adds further value, as this ABS Sire is one of the breed's elite curve-benders for calving-ease and growth.



AAR TEN X 7008 S A - Sire of Lot 10

**11 VPI SAVANNAH 3A20** Angus GS™

Calved: 08/28/2013		Cow 17622463		Tattoo: 3A20		SW	
#+ Connealy Consensus		# KMK Alliance 6595 I87		MARB		+61.54	
Connealy Consensus 7229		Blinda of Conanga 004		RE		+41.66	
*16447771 Blue Lilly of Conanga 16		# Woodhill Admiral 77K		FAT		+51.74	
# S S Objective T510 0T26		Blue Cash of Conanga 6020		CED		+10	
VPI Savannah 0X33		# S S Traveler 6807 T510		BW		+1.5	
*16932322 +* VPI 5899 Predestined 8U44		S S Miss Rita R011 7R8		WW		.57	
		#* G A R Predestined		YW		+90	
		VT Future Direction B49		Milk		+30	
						.39	

- ▶ Sells with her 8/23/18 herd sire prospect, Lot 11A, by HA Cowboy Up 5405.
- ▶ Productive cow from a Pathfinder Dam.
- ▶ She records a progeny WR 3@102. Her highly valued Dam posts a progeny WR 6@109, YR 6@104, RE 6@104, and IMF 108 on 6 head.
- ▶ She is a daughter of Connealy Consensus 7229, who was the #1 bull for registrations in 2014.
- ▶ She ranks among the elite 1% for \$QG, while blending that with a top 10% ranking for \$W and 15% for CED.



CONNEALY CONSENSUS 7229 - Sire of Lot 11



**12 VPI LADY OF CLASS Y111** (DOD,DLF,HYF,IEF)

Calved: 08/30/2011 Cow P43232798 Tattoo: Y111  
 DRF JWR PRINCE VICTOR 711 (SOD) HRP THM VICTOR 109W 9329 (SOD)  
**TH 122 711 VICTOR 719T** (SOD,CHB,DLF,HYF,IEF) RHF 964 VICTRA 4057  
 P42800895 KBCR 19D DOMINETTE 122 (DLF,IEF) NUW 1Y WRANGLER 19D (SOD,DLF,HYF,IEF)  
 KBCR DOMINETTE 9112  
 DR WORLD CLASS 517 10H (SOD,DLF,HYF,IEF) FELTONS 517 (SOD,HYF)  
**DR LADY OF CLASS 10H S06** VPI MARATHON LADY 0081  
 P42686851 DR WILLOW OAK 65H N05 ET LLL TIMBER 65H (DLF,HYF,IEF)  
 KCF MISS X4 B144

MARB	BMI\$
+0.07	+\$413
RE	BII\$
+0.29	+\$485
FAT	CHB\$
+0.004	+\$86

CED	BW	WW	YW	Milk
+8.0 .31	+1.3 .49	+54 .41	+73 .43	+32 .27



TH 122 711 VICTOR 719T - Sire of Lot 12

- ▶ Will calve prior to sale time to **CRR 109 Catapult 322.**
- ▶ This is a productive cow in the VT program as she is a Dam Of Distinction in the Hereford breed.
- ▶ She posts progeny BW ratio 5@98, WR 5@107, and YR 4@100.
- ▶ This homozygous, polled cow is donor quality and has the credentials to build a very strong program.
- ▶ She is the Dam of the Lot 26 bull.



**13 VPI STYLISH LADY B413** (DLF,HYF,IEF)

Calved: 09/19/2014 Cow P43552712 Tattoo: B413  
 CHURCHILL SENSATION 028X (CHB,SOD,DLF,HYF,IEF) UPS DOMINO 3027 (SOD,DLF,HYF,IEF)  
**CHURCHILL RED BULL 200Z** (CHB,DLF,HYF,IEF) CHURCHILL LADY 7202T ET (DLF,HYF,IEF)  
 P43281860 CHURCHILL LADY 002X ET (DLF,HYF,IEF) GOLDEN OAK OUTCROSS 18U (SOD,CHB,DLF,HYF,IEF)  
 CHURCHILL LADY 600S ET (DLF,HYF,IEF)  
 KCF BENNETT 774 R413 (SOD,DLF,HYF,IEF) FELTONS DOMINO 774 (SOD,DLF,HYF,IEF)  
**VPI STYLISH LADY Y104** KCF MISS H142 L332 (DOD)  
 P43205387 VPI STYLISH LADY W907 DR WORLD CLASS 517 10H (SOD,DLF,HYF,IEF)  
 VPI STYLISH LADY T704

MARB	BMI\$
-0.17	+\$366
RE	BII\$
+0.43	+\$421
FAT	CHB\$
+0.024	+\$102

CED	BW	WW	YW	Milk
+7.6 .34	+1.5 .78	+56 .41	+82 .42	+34 .21



VPI STYLISH LADY B413 - Lot 13

- ▶ **Sells with her 8/19/18 herd sire prospect, Lot 13A, by KT Small Town Kid 5051.**
- ▶ This is a heterozygous, polled cow from a productive cow family.
- ▶ She posts a progeny WR 2@105 and her dam records a progeny WR 5@107.
- ▶ She blends superior production and pedigree credentials in the prime of her productive years.
- ▶ She is the Dam of the Lot 25 bull.

*Hokie Angus Breeding Age Bulls*



**14 VPI OLD HICKORY 7E21** Angus GS™

Calved: 08/23/2017 Bull 19043820 Tattoo: 7E21  
 \* Plattermere Weigh Up K360 # Sitz Upward 307R  
**Deer Valley Old Hickory** (RDF) # Barbara of Plattermere 337  
 +\*17873666 +\* Deer Valley Rita 1126 #+ S A V Bismarck 5682 (RDF)  
 #\* G A R Predestined # G A R Objective 2345  
 # B/R New Design 036  
**VPI Predestined 8U45** #+ G A R Ext 4206  
 +16382508 + VT Grid Maker B1 #+\* G A R Grid Maker  
 + G A R Precision 100

\$W	+56.77
\$F	+81.77
\$G	+42.41
\$B	+163.53

MARB	RE	FAT
+0.59	+0.79	-0.035

CED	BW	WW	YW	Milk
+0 .35	+4.8 .53	+67 .42	+115 .38	+26 .29



VPI OLD HICKORY 7E21 - Lot 14

- ▶ **Power Bull For Cows.**
- ▶ His Dam is one the most productive cows in the VT program and is a product of their ET program.
- ▶ His Dam records a progeny WR 7@108, YR 5@107, IMF 5@107, and RE 5@101.
- ▶ 7 Pathfinder Sires and Dams can be found in his 3-generation pedigree.

BW	AWW	RATIO	AYW	RATIO	IMF	REA	FAT	SCROTAL
88	644	99	1191	98	2.41	13.7	0.13	38.6



**15 VPI SURE FIRE 7E30** Angus GS™

Calved: 09/05/2017 Bull 19043827 Tattoo: 7E30  
 #\* Connealy In Sure 8524 #\* Mytty In Focus (RDF)  
**G A R Sure Fire** (RDF) Entreena of Conanga 657  
 +\*17328461 + Chair Rock 5050 G A R 8086 #+ G A R New Design 5050  
 Chair Rock Grid Maker 2107  
 \* Ankonian Federico 9223 #\* A A R Ten X 7008 S A  
**Ankony Miss Primrose A042** PRS New Dimension Lass 0023  
 \*18373800 + CF Primrose U25 # D H D Traveler 6807  
 + EXAR Primrose 2972

\$W	+44.30
\$F	+34.69
\$G	+53.43
\$B	+130.93

MARB	RE	FAT
+1.10	+0.69	+0.013

CED	BW	WW	YW	Milk
+11 .37	+7 .53	+49 .43	+92 .38	+25 .30



GAR SURE FIRE - Sire of Lot 15

- ▶ **Heifer Bull**
- ▶ Big scrotal, big ribeye, and high IMF bull best describes this son of "Sure Fire".
- ▶ With an actual BW of 71# and a double digit CED, he has the credentials to produce trouble-free progeny on heifers.
- ▶ He ranks in the elite 4% on MARB, \$G, and \$QG. He stands among the top 15% on CED.

BW	AWW	RATIO	AYW	RATIO	IMF	REA	FAT	SCROTAL
71	606	93	1142	94	4.36	13.1	0.29	38.0

## 16 VPI WHITLOCK 7E34 Angus GS™

Calved: 09/15/2017		Bull 19043830		Tattoo: 7E34		\$W		
#* S Chisum 6175		S Alliance 3313		MARB		+69.09		
<b>S Whitlock 179</b>		# S Gloria 464		RE		\$F		
# S Pride Anna 709		# R&S Expedition 1404 [RDF]		+ .43		+107.27		
* EXAR Denver 2002B		# S Pride Anna 567		RE		\$G		
VPI Blackbird 5C32		** EXAR Upshot 0562B		+ .37		+28.25		
18262008 VPI Blackbird 6548		+ Exar Royal Lass 1067		FAT		\$B		
		** S S Objective T510 OT26		+ .019		+144.20		
		+ VPI Blackbird 4P23		CED		BW		
				+13 .37		+1.5 .53		
				+72 .43		+136 .39		
				+27 .30		Milk		
BW	AWW	RATIO	AYW	RATIO	IMF	REA	FAT	SCROTAL
83	669	103	1216	100	3.66	11.9	0.30	39.4

### ▶ Performance Bull for Cows and Heifers.

- ▶ He is a pounds-heavy bull at weaning from a first-calf heifer that sells as Lot 9.
- ▶ He stands among the elite non-parent bulls at 2% on YWEPD and \$F.
- ▶ He ranks in the top 4% on WWEPD and 10% on CED.
- ▶ Big scrotal and high IMF are expressed with this bull.



S WHITLOCK 179 - Sire of Lots 16-20

## 17 VPI WHITLOCK 7E18 Angus GS™

Calved: 08/23/2017		Bull *19044947		Tattoo: 7E18		\$W		
#* S Chisum 6175		S Alliance 3313		MARB		+72.11		
<b>S Whitlock 179</b>		# S Gloria 464		RE		\$F		
#*17007891 # S Pride Anna 709		# R&S Expedition 1404 [RDF]		+ .70		+78.29		
+* V A R Index 3282		# S Pride Anna 567		RE		\$G		
VPI 2Z18 Rita 5C13 ET		#+ G A R Ingenuity		+ .55		+37.73		
+*18246270 Vpi 7T39 Rita 2Z18		+* Sandpoint Blackbird 8809		FAT		\$B		
		**+* G A R Prophet		+ .051		+133.41		
		+ VPI Rita 317 7T39 ET		CED		BW		
				+12 .34		+2 .48		
				+69 .42		+125 .38		
				+27 .29		Milk		
BW	AWW	RATIO	AYW	RATIO	IMF	REA	FAT	SCROTAL
65	644	ET	1215	ET	3.18	12.7	0.28	36.6

### ▶ Heifer Bull

- ▶ With a 65# BW and double-digit CED, he has the credentials to safely breed to heifers for a trouble-free calving season.
- ▶ He traces to a heritage from the VT ET program. His donor Grand Dam has been an important cow with a progeny WR 1@106.
- ▶ He traces to the \$10,000 valued VT Donor HHF Alli Rita 704 317 who has individually produced tens of thousands of dollars in progeny sales.
- ▶ He ranks in the top 5% of non-parent bulls for YWEPD and 10% for WWEPD and CED.



VPI WHITLOCK 7E18 - Lot 17

## 18 VPI WHITLOCK 7E35 Angus GS™

Calved: 09/17/2017		Bull *19043831		Tattoo: 7E35		\$W		
#* S Chisum 6175		S Alliance 3313		MARB		+69.26		
<b>S Whitlock 179</b>		# S Gloria 464		RE		\$F		
#*17007891 # S Pride Anna 709		# R&S Expedition 1404 [RDF]		+ .37		+86.38		
+* V A R Index 3282		# S Pride Anna 567		RE		\$G		
VPI Blackbird 5C25		#+ G A R Ingenuity		+ .46		+23.89		
18239547 Vpi Blackbird 2Z22		+* Sandpoint Blackbird 8809		FAT		\$B		
		** Connealy Contrast		+ .045		+142.59		
		VPI Blackbird 6S48		CED		BW		
				+11 .37		+1.3 .52		
				+63 .42		+117 .38		
				+32 .29		Milk		
BW	AWW	RATIO	AYW	RATIO	IMF	REA	FAT	SCROTAL
76	651	100	1238	102	2.63	12.2	0.22	37.4

### ▶ Heifer Bull

- ▶ Another son of the Pathfinder sire, "Whitlock".
- ▶ He has the credentials to use on heifers and cows with a 76# BW, double-digit CED, and BWEPD under +2.0.
- ▶ His EPD profile is balanced in all traits with plenty of growth to produce profitable calves that will weigh-up and pay-up at weaning.
- ▶ His Grand Dam is the dam of the Lot 10 cow in this sale.
- ▶ He ranks in the top 10% on YWEPD and 15% on CED.

## 19 VPI WHITLOCK 7E29 Angus GS™

Calved: 09/04/2017		Bull 19043826		Tattoo: 7E29		\$W		
#* S Chisum 6175		S Alliance 3313		MARB		+76.83		
<b>S Whitlock 179</b>		# S Gloria 464		RE		\$F		
#*17007891 # S Pride Anna 709		# R&S Expedition 1404 [RDF]		+ .55		+104.96		
+ G A R Prediction		# S Pride Anna 567		RE		\$G		
VPI 317 Rita 0X24		** G A R Predestined		+ .53		+29.54		
#16932324 + HHF Alli Rita 704 317		+ G A R Precision 191		FAT		\$B		
		# Sitz Alliance 6595		+ .037		+175.21		
		+ G A R Ext 704		CED		BW		
				+7 .35		+2.2 .53		
				+74 .43		+134 .39		
				+34 .32		Milk		
BW	AWW	RATIO	AYW	RATIO	IMF	REA	FAT	SCROTAL
89	630	97	1224	101	3.10	13.0	0.21	38.9

### ▶ Pounds-Heavy Bull

- ▶ He is the product of a Pathfinder Sire and Dam.
- ▶ He is a grandson of the \$10,000 valued HHF Alli Rita 704 317.
- ▶ His Dam records a progeny WR 6@105, YR 5@102, and IMF 5@103.
- ▶ He will add carcass and profitable pounds to your calf crop.
- ▶ He ranks in the elite 1% for CW, 2% for YWEPD, and 3% for WWEPD and \$B.



VPI WHITLOCK 7E29 - Lot 19

**20**
**VPI WHITLOCK 7E22** [DDF] **Angus GS™**

Calved: 08/26/2017 Bull #19043821 Tattoo: 7E22

\$W	+101.16
\$F	
MARB	+0.49
RE	+0.77
FAT	+0.040
\$B	+179.47

**S Whitlock 179**

#17007891 # S Pride Anna 709

\* Deer Valley All In [RDF]

**VPI 3A23 Rita 5C21**

18239545 Vpi 7T39 Rita 3a23

 S Alliance 3313  
 # S Gloria 464  
 # R&S Expedition 1404 [RDF]  
 # S Pride Anna 567  
 \*\* A A R Ten X 7008 S A  
 +\* Deer Valley Rita 0274  
 #+ G A R Ingenuity  
 + VPI Rita 317 7T39 ET

CED	BW	WW	YW	Milk
+7	.37	+1.6	.52	+92
.42				+157
.38				+35
.30				

BW	AWW	RATIO	AYW	RATIO	IMF	REA	FAT	SCROTAL
79	711	109	1271	100	3.05	14.0	0.28	40.7

**► Power & Growth Bull With Calving-Ease**

- This bull combines low-birth with exceptional performance to vault your program up to the next level.
- He weaned at over 700# and will add pounds to your calf crop.
- He is part of the elite non-parent bulls in the breed as he ranks at 1% for BWEPD, YWEPD, CW, \$W, and \$F.
- Profitable genetics with a 4% rank on \$B.
- He is a big scrotal bull with a large RE and his Dam sells as Lot 8.



VPI WHITLOCK 7E22 - Lot 20

**► Retaining 1/3 semen interest with no possession.**

## Hokie Simmental Breeding Age Bulls

**21**
**VPI ON DEMAND E784 ET**

Calved: 09/23/2017 Bull 3370848 Tattoo: E784

MARB	0.02
RE	0.81
FAT	-0.105
API	117.2
TI	66.2

**W/C ON DEMAND 283C**

3041232 MISS WERNING 283Z

CNS DREAM ON L186

**EBS SHESA ANDRIAS DREAM**

2275886 TRIPLEC SHESAVANNAH K137

 WCS MR PENDLETON 909W  
 WCS MS FROST 692S  
 GW LUCKY CHARM 665K  
 MISS WERNING 083X  
 NICHOLS LEGACY G151  
 CNS SHEEZA DREAM K107W  
 HC POWER DRIVE 88H  
 G&L SAVANNAH 607C

CED	BW	WW	YW	Milk
9.4	.19	1.2	.22	61.8
.20				88.8
.20				27.3
.19				

BW	AWW	RATIO	AYW	RATIO	IMF	REA	FAT	SCROTAL
90	649	ET	1132	ET	2.44	13.4	0.18	39.0

**► SimAngus (3/4SM 3/16AN 1/16MX)**
**► Homozygous Black & Polled**

- He is a flush brother to Lot 21A from the VT ET program.
- His Donor Dam posts a progeny WR 7@105 and has produced thousands of dollars in progeny sales.
- This lean bull will add carcass quality and pounds to your calf crop.



VPI ON DEMAND E784 ET - Lot 21

**21A**
**VPI ON DEMAND E782 ET**

Calved: 09/21/2017 Bull 3370846 Tattoo: E782

MARB	0.02
RE	0.81
FAT	-0.105
API	117.2
TI	66.2

**W/C ON DEMAND 283C**

3041232 MISS WERNING 283Z

CNS DREAM ON L186

**EBS SHESA ANDRIAS DREAM**

2275886 TRIPLEC SHESAVANNAH K137

 WCS MR PENDLETON 909W  
 WCS MS FROST 692S  
 GW LUCKY CHARM 665K  
 MISS WERNING 083X  
 NICHOLS LEGACY G151  
 CNS SHEEZA DREAM K107W  
 HC POWER DRIVE 88H  
 G&L SAVANNAH 607C

CED	BW	WW	YW	Milk
9.4	.19	1.2	.22	61.8
.20				88.8
.20				27.3
.19				

BW	AWW	RATIO	AYW	RATIO	IMF	REA	FAT	SCROTAL
83	737	ET	1172	ET	1.92	14.1	0.15	36.0

**► Sim Angus (3/4SM 3/16AN 1/16MX)**
**► Homozygous Black & Polled**

- He is a flush brother to Lot 21 from the VT ET program.
- Maximize weaning pounds to your calf crop with this bull.
- His Donor Dam records a progeny WR 7@105 and has produced thousands of dollars in progeny sales.



EBS SHESA ANDRIAS DREAM - Donor Dam of Lots 21 &amp; 21A



**22 VPI LIVE AMMO E773**

Calved: 08/31/2017 Bull 3370856 Tattoo: E773

**WINC LIVE AMMO 420B**  
 2885552 RCFS SWEET TREAT  
 GW LUCKY BREAK 047G  
**VPI BLACK PRINCESS N361**  
 2224992 SHS MISS ADVANTAGE J10

REMINGTON LOCK N LOAD54U REMINGTON ON TARGET 2S  
 BAR15 MISS KNIGHT78E-51G  
 R&R WAREHOUSE K609  
 TRIPLE C BEAUTY J31C  
 LCHMAN LUCKY BUCK 7049C  
 GW MISS 600U 1351C  
 NICHOLS ADVANTAGE E60  
 SHS BLACK PRINCESS E30

MARB	-0.09
RE	0.85
FAT	-0.147
API	118.0
TI	68.4

CED	BW	WW	YW	Milk	
9.1	.21	2.7 .33	72.6 .27	114.2 .26	19.2 .21

BW	AWW	RATIO	AYW	RATIO	IMF	REA	FAT	SCROTAL
89	634	107	1091	102	1.88	11.2	0.06	37.0

- ▶ Purebred Simmental
- ▶ Black & Polled
- ▶ He was pounds-heavy at weaning and yearling with a 107 and 102 ratio, respectively.
- ▶ His Dam is from the heart of the program with a progeny WR 9@97.



WINC LIVE AMMO 420B - Sire of Lots 22 &amp; 23

**23 VPI LIVE AMMO E778 ET**

Calved: 09/19/2017 Bull 3370842 Tattoo: E778

**WINC LIVE AMMO 420B**  
 2885552 RCFS SWEET TREAT  
 S A F 598 BANDO 5175  
**SHADOE 1062 OF FOXCROSS**  
 2568483 CHAMPION HILL SHADOE 135

REMINGTON LOCK N LOAD54U REMINGTON ON TARGET 2S  
 BAR15 MISS KNIGHT78E-51G  
 R&R WAREHOUSE K609  
 TRIPLE C BEAUTY J31C  
 BON VIEW BANDO 598  
 S A F ROYAL LASS 1002  
 WHITESTONE WIDESPREAD MB  
 CHAMPIONHILL STONESHADOE

MARB	0.25
RE	0.70
FAT	-0.033
API	130.3
TI	70.9

CED	BW	WW	YW	Milk	
11.2	.34	1.0 .42	67.7 .41	108.0 .41	23.8 .38

BW	AWW	RATIO	AYW	RATIO	IMF	REA	FAT	SCROTAL
83	769	ET	1199	ET	2.28	14.3	0.22	33.0

- ▶ ½ SM ½ AN
- ▶ Heterozygous Black, Homozygous Polled
- ▶ He is the product of the VT ET program.
- ▶ Pounds-heavy bull at 769# at weaning.
- ▶ He will add pounds, carcass, and heterosis to your calf crop.
- ▶ He is a product of "Live Ammo" and an exceptional Angus cow.



VPI LIVE AMMO E778 ET - Lot 23

**24 VPI PAY RAISE E788**

Calved: 10/12/2017 Bull 3370852 Tattoo: E788

**ICC PAY RAISE 4886**  
 3192574 ICC BLACKBIRD 0739  
 PVF-BF BF26 BLACK JOKER  
**VPI BLACK PRINCESS M262**  
 2170823 SHS BLACK PRINCESS E30

MILL COULEE PAY RAISE  
 BASIN PAYWEIGHT 107S  
 MILL COULEE BARBARA K 905  
 HOOVER DAM  
 M A R BLACKBIRD 8067  
 HARTS BLACK CASINO B408  
 PVF-BF MABELLE C131  
 BURTNER BULL YW3  
 SHS RED LADY

MARB	-0.01
RE	0.67
FAT	-0.042
API	109.5
TI	66.8

CED	BW	WW	YW	Milk	
11.7	.20	-0.1 .30	67.9 .25	114.8 .25	29.4 .18

BW	AWW	RATIO	AYW	RATIO	IMF	REA	FAT	SCROTAL
74	6	93	1062	99	2.37	12.1	0.18	35.0

- ▶ ½ SM ½ AN
- ▶ Black & Polled
- ▶ He is from a superior producing dam that posts a progeny WR 12@107, YR 8@105, and IMF 102 on 10 head.
- ▶ He is balanced in his EPD profile and will offer profitability in all traits.
- ▶ Keep all his daughters to sustain your program's maternal strength.



ICC PAY RAISE 4886 - Sire of Lot 24



## 25 VPI SMALL TOWN KID E710

Calved: 09/01/2017 Bull P43845995 Tattoo: E710

NJW 73S W18 HOMETOWN 10Y ET (CHB,DLF,HYF,IEF) SHF WONDER M326 W18 ET (CHB,DLF,HYF,IEF)  
 KT SMALL TOWN KID 5051 (DLF,HYF,IEF) NJW P606 72N DAYDREAM 73S (DLF,HYF,IEF)  
 P43621413 KT MS 0124TIMES A WASTIN 2086 (DOD,DLF,HYF,IEF) RST TIMES A WASTIN 0124 (CHB,DLF,HYF,IEF)  
 CHURCHILL RED BULL 200Z (CHB,DLF,HYF,IEF) KT MS K085 PROSPECTOR 4016 (DOD)  
 CHURCHILL SENSATION 028X (CHB,SOD,DLF,HYF,IEF)  
 VPI STYLISH LADY B413 (DLF,HYF,IEF) CHURCHILL LADY 002X ET (DLF,HYF,IEF)  
 P43552712 VPI STYLISH LADY Y104 KCF BENNETT 774 R413 (SOD,DLF,HYF,IEF)  
 VPI STYLISH LADY W907

MARB	BMIS
+0.04	+\$375
RE	BIIS
+0.48	+\$375
FAT	CHBS
+0.025	+\$107

CED	BW	WW	YW	Milk
+6.1	.24	+2.2	.31	+64
				.26
				+101
				.27
				+35
				.12

BW	AWW	RATIO	AYW	RATIO	IMF	REA	FAT	SCROTAL
78	592	102	1056	98	2.28	11.8	0.31	37.3



KT SMALL TOWN KID 5051 - Sire of Lots 7A, 13A, & 25

## 26 VPI MASTERMIND E715

Calved: 09/05/2017 Bull P43846007 Tattoo: E715

SHF WONDER M326 W18 ET (CHB,DLF,HYF,IEF) KCF BENNETT 3008 M326 (SOD,DLF,HYF,IEF)  
 NJW 73S W18 HOMETOWN 10Y ET (CHB,DLF,HYF,IEF) SHF GOVERNESS 236G L37 (DLF,HYF,IEF)  
 P43214853 NJW P606 72N DAYDREAM 73S (DLF,HYF,IEF) PW VICTOR BOOMER P606 (SOD,DLF,HYF,IEF)  
 NJW 94J DEW 72N (DLF,HYF,IEF)  
 TH 122 711 VICTOR 719T (SOD,CHB,DLF,HYF,IEF) DRF JWR PRINCE VICTOR 711 (SOD)  
 VPI LADY OF CLASS Y111 (DOD,DLF,HYF,IEF) KBCR 19D DOMINETTE 122 (DLF,IEF)  
 P43232798 DR LADY OF CLASS 10H S06 DR WORLD CLASS 517 10H (SOD,DLF,HYF,IEF)  
 DR WILLOW OAK 65H NO5 ET

MARB	BMIS
+0.35	+\$408
RE	BIIS
+0.44	+\$501
FAT	CHBS
+0.035	+\$100

CED	BW	WW	YW	Milk
+9.0	.30	+1.0	.32	+59
				.29
				+87
				.29
				+35
				.21

BW	AWW	RATIO	AYW	RATIO	IMF	REA	FAT	SCROTAL
72	659	113	1088	102	3.69	11.4	0.31	35.9



VPI MASTERMIND E715 - Lot 26

- ▶ Polled, Calving-Ease Bull from a Gold TPR Breeder.
- ▶ He is a moderately-framed son of the Lot 13 cow which has a progeny WR2@105.
- ▶ He is a low-birthweight bull and was pounds-heavy at weaning with a 102 ratio.
- ▶ FS 5.4

- ▶ Polled, Heifer Bull from a Gold TPR Breeder.
- ▶ This bull provides curve-bending performance.
- ▶ He was pounds-heavy at weaning and yearling with ratios of 113 and 102, respectively.
- ▶ His Dam sells as Lot 12 and is a Dam of Distinction in the Hereford breed with a progeny BW ratio 5@98 and WR 5@107.
- ▶ FS 5.5

# LIVE INTERNET BIDDING AT [www.cowbuyer.com](http://www.cowbuyer.com)

- Watch/bid in Real Time online.
- Registration is required. Please register at least one (1) hour prior to sale time at [www.cowbuyer.com](http://www.cowbuyer.com)
- High Speed Internet is required. Slower speed will not permit you to bid and keep pace in real time.
- Terms: Purchasing online constitutes a legal contract and promise for payment of purchases. All purchases must be paid within ten (10) days of sale date and prior to load out or delivery of cattle purchased.
- Cowbuyer LLC is a service provider and is not responsible for the activity or inactivity of any technology, internet connection at the sale site or connection and technology of the bidders



Watch/Bid in Real Time Online at [www.cowbuyer.com](http://www.cowbuyer.com)

For questions or information, contact: Aaron Ray Tompkins – 336/363-4639, [atompkin@vt.edu](mailto:atompkin@vt.edu)

**27 VPI 7019**  
 Calved: 1/27/2017 Breed: Angus Tattoo: 7019  
 Sire: W/C United 956Y MGS: Connealy Commander  
 ▶ Due: 3/9/2019 to VPI Fortress 6D28 (Angus)

**28 VPI 7040**  
 Calved: 2/1/2017 Breed: Angus Tattoo: 7040  
 Sire: CCR Frontier 0053Z MGS: Wye 98-3  
 ▶ Due: 3/9/2019 to VPI Fortress 6D28 (Angus)

**29 VPI 7058**  
 Calved: 2/3/2017 Breed: Sim/An Tattoo: 7058  
 Sire: CCR Frontier 0053Z MGS: LCC Red Dream  
 ▶ Due: 3/9/2019 to VPI Fortress 6D28 (Angus)

**30 VPI 7075**  
 Calved: 2/8/2017 Breed: Angus Tattoo: 7075  
 Sire: W/C United 956Y MGS: Net Present Value  
 ▶ Due: 3/9/2019 to VPI Fortress 6D28 (Angus)

## Hokie Commercial Bred Cows

**31 VPI 6098**  
 Calved: 3/1/2016 Breed: Angus Tattoo: 6098  
 Sire: Connealy Trustmark MGS: SYGEN Choice Plus  
 ▶ Due: 3/29/19 to VPI Lock Down D660 (3/4 SM 1/4 AN)

**32 VPI 6033**  
 Calved: 1/31/2016 Breed: Angus Tattoo: 6033  
 Sire: Connealy Trustmark MGS: LCC Dillion  
 ▶ Due: 5/2/2019 to VPI Lock Down D660 (3/4 SM 1/4 AN)

**33 VPI 6022**  
 Calved: 1/29/2016 Breed: Angus Tattoo: 6022  
 Sire: EF Complement 8088 MGS: LCC Dillion  
 ▶ Due: 4/28/2019 to VPI Lock Down D660 (3/4 SM 1/4 AN)

**34 VPI 6008**  
 Calved: 1/9/2016 Breed: Angus Tattoo: 6008  
 Sire: Connealy Final Four MGS: GAR Predestined  
 ▶ Due: 4/28/2019 to VPI Lock Down D660 (3/4 SM 1/4 AN)

**35 VPI 5070**  
 Calved: 2/4/2015 Breed: Angus Tattoo: 5070  
 Sire: Connealy Thunder MGS: LCC Dillion  
 ▶ Due: 3/29/2019 to VPI Lock Down D660 (3/4 SM 1/4 AN)

**36 VPI 5068**  
 Calved: 2/4/2015 Breed: Angus Tattoo: 5068  
 Sire: Connealy Thunder MGS: Angus  
 ▶ Due: 3/29/2019 to VPI Lock Down D660 (3/4 SM 1/4 AN)

**37 VPI 4076**  
 Calved: 2/22/2014 Breed: Angus Tattoo: 4076  
 Sire: GAR Predestined MGS: ALC Big Eye D09N  
 ▶ Due: 3/29/2019 to VPI Lock Down D665 (3/4 SM 1/4 AN)

**38 VPI 4022**  
 Calved: 1/27/2014 Breed: Angus Tattoo: 4022  
 Sire: Gardens Prime Star MGS: SYGEN Choice Plus  
 ▶ Due: 3/29/2019 to VPI Lock Down D665 (3/4 SM 1/4 AN)

**39 VPI 4018**  
 Calved: 1/16/2014 Breed: Angus Tattoo: 4018  
 Sire: Net Present Value MGS: OCC Great Plains  
 ▶ Due: 4/22/2019 to VPI Lock Down D665 (3/4 SM 1/4 AN)

**40 VPI 4011**  
 Calved: 1/9/2014 Breed: Sim/An Tattoo: 4011  
 Sire: Net Present Value MGS: TNT Jump Start R238  
 ▶ Due: 5/2/2019 to VPI Lock Down D665 (3/4 SM 1/4 AN)

## Reference Sires - Not For Sale

**A VPI FORTRESS 6D28**  
 Calved: 09/04/2016 Bull 18558018 Tattoo: 6D28

#* Connealy Consensus	# KMK Alliance 6595 I87	MARB	\$W
K C F Bennett Fortress (RDF)	Blinda of Conanga 004	+ .62	\$F
+*17259012 * Thomas Patricia 9705	* S S Objective T510 OT26	RE	\$G
	+ Thomas Patricia 71138	+ .69	\$B
	# B/R New Design 036	FAT	\$B
VPI Rita 317 7T39 ET	#+ G A R Ext 4206	+ .001	\$B
+16021999 + HHF Alli Rita 704 317	# Sitz Alliance 6595		
	+ G A R Ext 704		

CED	BW	WW	YW	Milk
+10 .34	+1.0 .51	+77 .45	+142 .41	+31 .30



VPI Fortress 6D28 - Service Sire of Lots 27-30

**B VPI LOCK DOWN D665 ET**  
 Calved: 02/04/2016 Bull 3123969 Tattoo: D665

REMINGTON LOCK N LOAD54U	REMINGTON ON TARGET 2S	MARB	API
W/C LOCK DOWN 206Z	BAR15 MISS KNIGHT78E-51G	0.28	130.3
2658496 G C F MISS NEW LEVELR206	IRONWOOD NEW LEVEL	RE	TI
	M A F EILEEN 0113	0.78	72.7
	NICHOLS LEGACY G151	FAT	TI
CNS DREAM ON L186	CNS SHEEZA DREAM K107W	-0.045	
EBS SHESA ANDRIAS DREAM	HC POWER DRIVE 88H		
2275886 TRIPLEC SHESAVANNAH K137	G&L SAVANNAH 607C		

CED	BW	WW	YW	Milk
12.5 .41	-1.1 .47	+4.9 .46	99.8 .46	26.0 .43



J & J Weigh Up 294

**C J & J WEIGH UP 294**  
 Calved: 02/22/2014 Bull 18004546 Tattoo: 294

# Sitz Upward 307R	#* Connealy Onward	MARB	\$W
Plattemere Weigh Up K360	Sitz Henrietta Pride 81M	+ .71	\$F
*16692552 # Barbara of Plattemere 337	# G A R Retail Product	RE	\$G
	Barbara of Plattemere 311	+ .63	\$B
	# Connealy Right Answer 746	FAT	\$B
J & J Miss Georgina 294	TC Chloe 7036	+ .002	\$B
17407507 J&J Miss Georgina 927	Hoff Steeler SC 333 196		
	# J&J Georgina 720		

CED	BW	WW	YW	Milk
+9 .47	-.8 .74	+65 .69	+116 .29	+31 .34

### D CTS REMEDY 1T01

Calved: 08/23/2011		Bull 17331233		Tattoo: 1T01		SW	
# Baldridge Kaboom K243 KCF		# Jauer 353 Traveler 589 27		MARB		+\$6.76	
Connealy Thunder [RDF]		Pleasanta of Conanga 736		RE		\$F	
#15148659 # Parka of Conanga 241		# Bon View Bando 598		+39		+\$91.03	
		Partina of Conanga 6237		RE		\$G	
# L T 598 Bando 9074		#+ S A F 598 Bando 5175		+80		+\$33.05	
CTS 7V03 Bellemere Maid 9T02		# Mill Coulee Barbara K 323		FAT		\$B	
16670378 SVA Rita 7V03 of 1407 502		# Bon View New Design 1407 [RDF]		-0.23		+\$156.37	
		JBS 334 Bellemere Maid 502		CED		BW	
				WW		YW	
				Milk			
				+7		.81	
				-1.1		.93	
				+55		.91	
				+119		.85	
				+33		.55	



CTS Remedy 1T01

### E TJ MAIN EVENT 503B

Calved: 01/22/2014		Bull 2891336		Tattoo: 503B		MARB	
ELLINGSON LEGACY M229		NICHOLS LEGACY G151		RE		API	
MR NLC UPGRADE U8676		ELLINGSON MS PSTOCK K58		0.85		151.9	
2474338 MS NLC MOJO S6119 B		GLS MOJO M38		FAT		TI	
		GFI DARLA M410		-0.053		96.8	
BOYD NEW DAY 8005		A A R NEW TREND		CED		BW	
TJ MISS NEW DAY U14		S V F FOREVER LADY 57D		WW		YW	
2656917 T J MISS CALIFORNIA K13		CALIFORNIA TRAVELER		Milk			
		R A MISSIE 844		12.6		.62	
				0.5		.86	
				101.3		.80	
				144.3		.78	
				24.7		.52	



TJ Main Event 503B

### F CCR WIDE RANGE 9005A

Calved: 02/07/2013		Bull 2725666		Tattoo: 9005A		MARB	
HOOKS SHEAR FORCE 38K		NICHOLS LEGACY G151		RE		API	
S D S GRADUATE 006X		C&D TRACY		1.34		124.0	
2548143 S D S QUEEN 814U		ALC BIG EYE D09N		FAT		TI	
		S D S QUEEN 443P		-0.028		75.3	
HTP SVF IN DEW TIME		CNS DREAM ON L186		CED		BW	
CCR MS APPLE 9332W		HTP SVF HONEYDEW		WW		YW	
2527626 CCR 992F FULLHOUSE 3249N		RC FULL HOUSE 025L		Milk			
		CR MS COSMO		13.2		.77	
				-0.1		.91	
				79.9		.88	
				122.5		.88	
				15.2		.65	



CCR Wide Range 9005A

### G CRR ABOUT TIME 743

Calved: 02/26/2007		Bull 42797564		Tattoo: 743		BMI\$	
CS BOOMER 29F (SOD,CHB,DLF,HYF,IEF)		REMITALL BOOMER 46B (CHB,SOD,DLF,HYF,IEF)		MARB		+\$483	
THM DURANGO 4037 (SOD,DLF,HYF,IEF)		CS MISS 1ST FLAG 21A (DOD,DLF,IEF)		RE		CEZ\$	
P42460503 THM 7085 VICTRA 9036 (DLF,HYF,IEF)		THM VICTOR DOM 7085		+0.39		N/A	
		THM VICTRA 5404 7073		FAT		BII\$	
SHF INTERSTATE 20X D03 (SOD,DLF,HYF,IEF)		REMITALL KEYNOTE 20X (SOD,CHB)		-0.055		+\$548	
CRR D03 CASSIE 206 (DLF,HYF,IEF)		DR MISS D45 V100 (DOD)		CHBS		+\$89	
P42330554 CRR 475E CASSIE 838		S7R 583B TOUCHDOWN 475E		CED		BW	
		CRR 814 CASSIE 158 (DOD)		WW		YW	
				Milk			
				+1.9		.72	
				+2.2		.94	
				+54		.91	
				+78		.89	
				+26		.86	



CRR About Time 743



**H KT SMALL TOWN KID 5051**

Calved: 02/18/2015 Bull 43621413 Tattoo: 5051

SHF WONDER M326 W18 ET (CHB,DLF,HYF,IEF) KCF BENNETT 3008 M326 (SOD,DLF,HYF,IEF)  
 NJW 73S W18 HOMETOWN 10Y ET (CHB,DLF,HYF,IEF) SHF GOVERNESS 236G L37 (DLF,HYF,IEF)  
 P43214853 NJW P606 72N DAYDREAM 73S (DLF,HYF,IEF) PW VICTOR BOOMER P606 (SOD,DLF,HYF,IEF)  
 NJW 94J DEW 72N (DLF,HYF,IEF)  
 RST TIMES A WASTIN 0124 (CHB,DLF,HYF,IEF) CRR ABOUT TIME 743 (SOD,DLF,HYF,IEF)  
 KT MS 0124 TIMES A WASTIN 2086 (DOD,DLF,HYF,IEF) RST MS 1000 BLAZER 2029 (DOD,DLF,HYF,IEF)  
 43290330 KT MS K085 PROSPECTOR 4016 (DOD) HUTH PROSPECTOR K085 (SOD,DLF,HYF,IEF)  
 KT MS 2D ENHANCER 2058 (DOD)

MARB	BMI\$
+0.42	+\$390
RE	BII\$
+0.48	+\$498
FAT	CHBS
+0.045	+\$107

CED	BW	WW	YW	Milk
+9.5 .40	+0.3 .72	+71 .60	+112 .59	+35 .24



KT Small Town Kid 5051

**I SPRING COVE PAYGRADE 5064**

Calved: 01/30/2015 Bull 18251392 Tattoo: 5064

#+\* Basin Payweight 006S # Vermilion Payweight J847  
 Basin Payweight 1682 + Basin Lucy 3829  
 +\*17038724 21AR O Lass 7017 # HARB Pendleton 765 J H  
 21AR O Lass F24A  
 \* C C A Emblazon 702 #+ O C C Emblazon 854E  
 Spring Cove Ella 064 Limestone Blackcap R128  
 16773411 Spring Cove Ella 747 + Spring Cove OnTime SB 100B  
 Spring Cove Ella 341

MARB	\$W
+1.10	+\$61.59
RE	\$F
+17	+\$46.13
FAT	\$G
+0.49	+\$46.02
	\$B
	+\$124.81

CED	BW	WW	YW	Milk
+11 .44	+0 .73	+53 .65	+91 .59	+29 .32



Spring Cove Paygrade 5064

**J ICC PAY RAISE 4886**

Calved: 03/30/2014 Bull 17974692 Tattoo: 4886

#+\* Basin Payweight 107S # Vermilion Payweight J847  
 Mill Coulee Pay Raise + Basin Lucy 3829  
 \*17468974 #\* Mill Coulee Barbara K 905 #\* S A V Final Answer 0035 [RDF]  
 Mill Coulee Barbara K 414  
 #\* Hoover Dam #\* SydGen C C & 7  
 ICC Blackbird 0739 # Erica of Ellston C124  
 +16816874 # M A R Blackbird 8067 # Sitz Traveler 8180  
 Jolly R Blackbird 184A

MARB	\$W
+0.08	+\$55.82
RE	\$F
+51	+\$115.24
FAT	\$G
+0.008	+\$11.70
	\$B
	+\$140.79

CED	BW	WW	YW	Milk
+5 .58	+2.2 .86	+74 .77	+139 .50	+18 .28



ICC Pay Raise 4886

**K 3F EPIC 4631**

Calved: 01/25/2014 Bull 17950219 Tattoo: 4631

#\* Connealy Final Product \* Connealy Product 568  
 Varilek Product 2010 04 # Ebonista of Conanga 471  
 \*17310103 Varilek Pearl 0006 014 #+ S A V Bismarck 5682 [RDF]  
 Varilek Pearl 8115 825  
 #\* EF Complement 8088 # Basin Franchise P142  
 Zebo Queen 1072 + EF Everelda Entense 6117  
 17056212 EXG Blackcap 6247 PPC #+\* EXAR New Look 2971  
 PPC Classic Blackcap 4980

MARB	\$W
+0.79	+\$81.07
RE	\$F
+45	+\$136.15
FAT	\$G
+0.068	+\$32.70
	\$B
	+\$183.64

CED	BW	WW	YW	Milk
+13 .78	-3 .92	+88 .87	+155 .79	+24 .35



3F Epic 4631

## L HA Cowboy Up 5405

Calved: 01/30/2015		Bull 18286467		Tattoo: 5405		\$W	+49.05
* KG Solution 0018		# MOGCK Sure Shot		MARB	\$F		
<b>HA Outside 3008</b>		KG Rito Lady 8724		+ .18	+133.53		
*17651088	* HA Ever Lady 1575	#+ S A V Bismarck 5682 (RDF)		RE	\$G		
		HA Ever Lady 8066		+ .66	+17.71		
	# Sitz Upward 307R	*# Connealy Onward		FAT	\$B		
	<b>HA Blackcap Lady 1602</b>	Sitz Henrietta Pride 81M		- .007	+179.87		
*#17055741	HA Blackcap Lady 5515	# E&b 4137 Dominett 814					
		+ HA Blackcap Lady 3833					
CED	BW	WW	YW	Milk			
+7 .74	+2.3 .95	+80 .92	+144 .85	+7 .30			



HA Cowboy Up 5405

## M CRR 109 CATAPULT 322

Calved: 02/19/2013		Bull P43384585		Tattoo: 322		MARB	BMI\$
TH 122 711 VICTOR 719T (SOD,CHB,DLF,HYF,IEF)		DRF JWR PRINCE VICTOR 711 (SOD)		-0.03	+\$438	RE	BI\$
<b>CRR 719 CATAPULT 109</b> (DLF,HYF,IEF)		KBCR 19D DOMINETTE 122 (DLF,IEF)		+0.61	+\$508	FAT	CHB\$
P43186342	CRR 4037 ECLIPSE 808 (DLF,HYF,IEF)	THM DURANGO 4037 (SOD,DLF,HYF,IEF)		-0.015	+\$104		
		CRR 420 ECLIPSE 688 (DLF,HYF,IEF)					
	CRR 63J KODIAK 713 (DLF,IEF)	S&S KODIAK 63J (SOD)					
<b>CRR 713 KELLY 0117</b> (DLF,HYF,IEF)		CRR P606 HONEY 531 ET (DLF,HYF,IEF)					
P43126662	CRR 9B KELLY 521 (DOD,DLF,HYF,IEF)	C&L DOUBLE TIME 452M 9B (SOD)					
		CRR D03 KELLY 361 (DLF,IEF)					
CED	BW	WW	YW	Milk			
-0.7 .49	+1.6 .83	+60 .73	+89 .73	+25 .31			



CRR 109 Catapult 322



# Virginia Tech Beef Leadership Council



*“The Beef Leadership Council strives to advocate for the beef industry, build relationships between producers and students, promote student leadership growth, and hopes to secure a positive future for agriculture and the beef industry.”*

### Raffle Items include:

- **12ft Sloux Gate**  
Provided by  
**Rockingham Co-op**
- **NCBA Cabela's Cooler**
- **Provided by NCBA**  
**And more!**

Raffle Tickets are  
\$10 each  
or 3 for \$25

Winners are NOT required to be present at the sale. Items can be picked up the sale night, or a time can be scheduled for pick up after sale date. Raffle Items will be drawn at the beginning of the sale.



Raffle Tickets can be preordered & also available before the Hokie Harvest Sale.  
To Pre-Order Call  
Garrett Coffey (540) 325- 8852

September 6, 2018

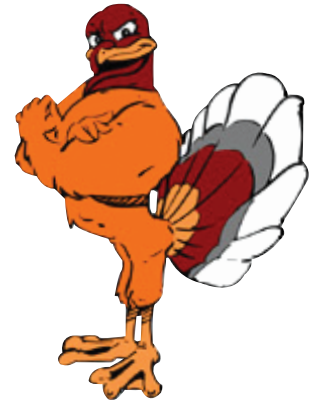
Dear Friends and Supporters,

It is our honor and privilege as the 2018 Livestock Merchandising Class at Virginia Tech to present to you the 24th Annual Hokie Harvest Sale Catalog. As we strive to uphold the high standards of quality and strong tradition set by previous merchandising classes, we request your presence on Friday, October 26th at the 2018 Hokie Harvest Sale on our beautiful campus in Blacksburg, Virginia. The sale will begin at 6:30 p.m. in the Animal Judging Pavilion located at 500 Plantation Road.

Now in its 24th year, this annual auction continues to be a joint effort from all the students enrolled in the Livestock Merchandising Class. Many willing, dedicated professionals have served as guest speakers and mentors during the duration of the class and have thoroughly educated us on sale preparation and administration as we plan to oversee the sale. Organizing the Hokie Harvest Sale teaches each member of the class valuable skills such as the management and coordination of a successful production sale, while providing high quality, hand-picked livestock to offer to the public. This year's auction will include 54 fantastic purebred and commercial beef cattle, including 7 purebred spring pair splits, 6 fall-calving elite purebred cows, 14 spring calving commercial cows and heifers, and 14 breeding age bulls. Our wonderful hand-picked crop of cattle includes the Angus, Hereford, and Simmental breeds.

The Hokie Harvest Sale is also fortunate enough to add an online auction of 8 Virginia Tech born and raised Quarter Horses, varying from yearlings to aged horses. The online auction of these impressive horses will open on October 1st, and close at 6 p.m. on October 26th, following the in-person showcase from 2-5 PM in the Alphin-Stuart Livestock Arena on sale day. All proceeds from the Hokie Harvest sale directly benefit the Department of Animal & Poultry Sciences and its programs to benefit the Virginia Tech students, research efforts, and extension education.

We appreciate your invaluable support and invite you to attend a complimentary barbeque dinner served prior to sale time in the Alphin-Stuart Arena beginning at 4:30 p.m. up until sale time. Join us in fellowship while enjoying some delicious food. Thank you for your continued support and interest in helping us further our education as we serve you. "Come Experience the Harvest" with us on October 26th at the 24th Annual Hokie Harvest Sale; we look forward to seeing you!



Sincerely,

Catalog and Social Media Committee

Sarah Baynard, Cassidy Rabun, Claudia Bollinger, Emily Riley, Jasmine Vaughan, Jonathan Ellis-Smith,  
Madeline Wood, Madison Venhuizen, and Tierra Scott

2018 Virginia Tech Livestock Merchandizing Class

## SALE DAY ACTIVITIES

- 3:00 – 7:00 pm ..... Buyer Registration
- 4:30 – 6:30 pm ..... Complimentary Barbecue Dinner at the Alphin-Stuart Arena
- 6:30 pm ..... Sale Time Beef Cattle - Animal Judging Pavilion

## HOKIE HARVEST ONLINE HORSE SALE

Bidding opens Monday, October 1st, 2018  
Bidding closes Friday, October 26th, 2018 at 6pm  
Auction site: <https://horsesales.cals.vt.edu/>  
Sale Day Phone: Lisa Nulton (585) 662-3102

### Horse Sale Showcase

Friday, October 26th, 2018 from 2pm-5pm

During this event all sale horses will be available to be viewed and handled by potential buyers.

Virginia Tech Campus at the Alphin-Stuart Livestock Arena  
500 Plantation Rd, Blacksburg, VA 24061

Facebook: <https://www.facebook.com/SmithfieldHorseCenter>

### Training Details

Horses sold at the Hokie Harvest Online Sale have participated in the Behavior and Training course. During this course students' work with the Virginia Tech yearlings and weanlings teaching the horses to lead, tie, load, stall, stand for the farrier, bathing and clipping. The yearlings are all taught to stand to be tacked, accepting a saddle and bit, and lunge quietly. The aged horses have gone through the same training and handling with the addition of some under saddle work.

### Terms and Conditions

**Applicable Law:** All horses are offered according to the laws of the State of Virginia. There are no warranties or guarantees implied as to the fitness for any particular purpose(s) of any horse offered in this sale. Our best efforts have been employed to document unsoundnesses or vices in any animal and such records are available for review before the sale. Bidders are cautioned to examine records and horses closely before bidding and purchasing. Every effort has been made to give complete disclosure of all known negative factors (health, disposition, management, etc.) on all horses in the sale. However, no employee or agent of Virginia Tech can or shall be considered responsible for any oversight of a fault. All horses are sold "caveat emptor" (buyer beware). All sales are final and absolute. No refunds will be given for any reason.

**Pre-purchase exams:** Prospective buyers are encouraged to carry out pre-purchase exams on sales horses of interest. Pre-purchase exams will be completed at the prospective bidder's expense, and may be completed by a licensed veterinarian of their choice. Pre-purchase exams must be scheduled in advance and an employee or agent of Virginia Tech must be in attendance during the exam. Pre-purchase exams must be completed no later than Tuesday, October 23<sup>rd</sup>. Procedures to be done during the exam must be approved in advance. No flexion tests will be permitted on horses two years old or younger without permission. Pre-purchase exams must be carried out at the Smithfield Horse Center and horses must be handled at all times by employees or agents of Virginia Tech.

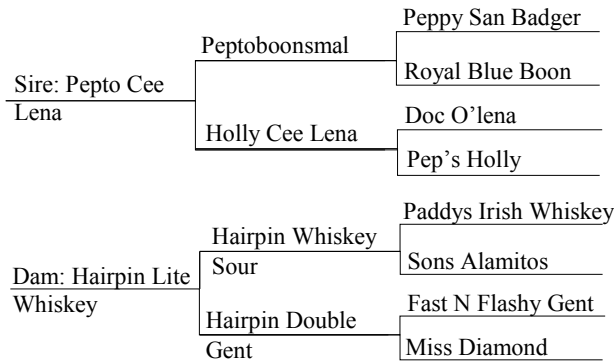
**Bidding Procedure:** Registration as a bidder commits that bidder to purchase any horse for which he/she has the winning (high) bid. The online bidding will close promptly at 6:00 pm on Friday, October 26<sup>th</sup>. If a bid placed by any bidder within 5 minutes of the auction closing the auction will be extended by an additional 5 minutes. This will continue until there are no new bids made within a 5 minute window. At that point the high bidder will be awarded the horse!

**Assumption of Risk:** The purchaser, at the close of bidding, assumes all risk and responsibility for the horse. All horses must be removed from the farm within 14 days of the end of the online bidding. During the stay of the horse, Virginia Tech shall continue to provide all normal care and neither Virginia Tech, nor its employees, officers, agents shall be liable for any accidents, disease, death or injury to any horse. Nor shall the aforementioned agents be responsible for any accidents or injuries inflicted by the horse on any persons, facilities or equipment. Sales horses are accustomed to traveling untied in a box stall in a fully-enclosed stock trailer. It is the buyer's responsibility to provide suitable transport for purchased horses and Virginia Tech, its employees, officers or agents will not be responsible for any accidents or injuries to animals, persons, or equipment during or after any horse is loaded onto a trailer. Students and/or staff will be available to assist with loading of horses, but without any liability being accepted for injury or accidents to animals, persons, or equipment.

**Sales Conditions and Payment:** All sales are final. Purchasers may not stop payment of a horse for any reason if he/she is the high bidder at the close of bidding. There will be a 5.3% service fee added to all final/winning bids.

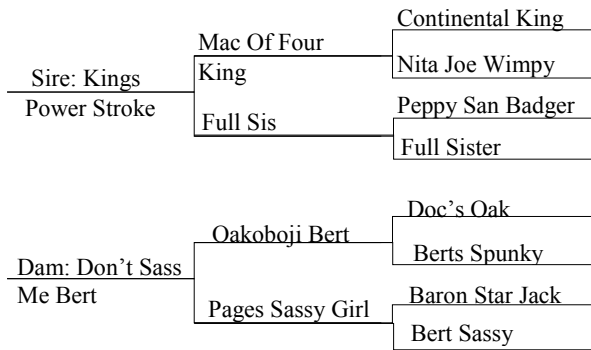
**Public Liability:** Neither Virginia Tech, nor its employees, officers or agents assume any responsibility for any injury, death, or damage of any kind to a person or animal. The public is not allowed in any stall, paddock, or pastures without permissions. Examine horses at your own risk. The public is cautioned to be very careful while on the grounds examining horses and particularly while horses are being handled, ridden or driven.

## LOT 1 VT Cee N Double



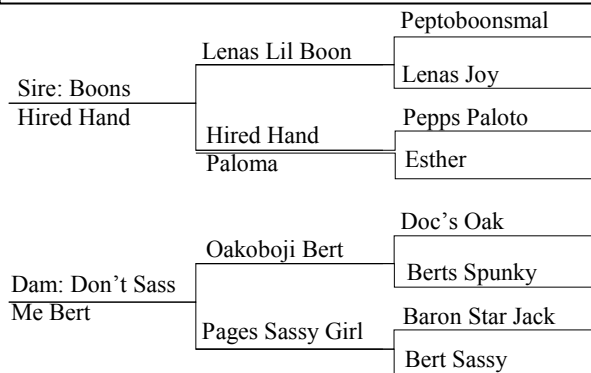
VT Cee N Double, “Emerald”, is an athletic 2017 roan mare out of Hairpin Lite Whiskey, a granddaughter of the AQHA World/Res. World Champion Sire and a NRCHA All-Time Leading Sire, Paddys Irish Whiskey. Emerald is by Pepto Cee Lena, a stallion with an outstanding show record. With her size, correct conformation, and quiet temperament she could be a wonderful all-around prospect.

## LOT 2 VT Queens Attitude



VT Queens Attitude, “Olive,” is a 2017 Sorrel mare sired by Kings Power Stroke who is an NRHA money earner and holds an AQHA ROM in reining. Olive is heavily influenced by foundation bloodlines with famous ancestor such as Continental King, Peppy San Badger, and Doc's Oak. Olive's correct conformation, length of hip, and depth of bone are sure to make her an excellent contender for performance halter, reining, or versatility ranch horse events.

## LOT 3 VT Boons Legacy



VT Boons Legacy, “Logan”, is a handsome 2016 red roan gelding and the last progeny by Boons Hired Hand, a 2004 grandson of the great Peptoboonsmal, an All-Time Leading Sire. Logan is bred equally as notable on his dam's side with her lines going back the great foundation sire, Doc's Oak. Logan is short coupled with exceptional balance offering him a promising career in ranch horse arena. Logan has been started under saddle.

## LOT 4 VT The Whiskey King

Sire: Kings Power Stroke	Mac Of Four	Continental King
	King	Nita Joe Wimpy
	Full Sis	Peppy San Badger
		Full Sister
Dam: Whiskey Freckle	Joese Irish	Paddys Irish Whiskey
	Barcelena	Trips Barcelena
	Freckles Leo	Freckles Playboy
		Miss War Chips



VT The Whiskey King, “Flint”, is out of Whiskey Freckle (Lot #8), a granddaughter of AQHA Hall of Famers Freckles Playboy and Paddys Irish Whiskey. Flint is sired by Kings Power Stroke who is an NRHA money earner and holds an AQHA ROM in reining. With Flint’s great mind, correct movement, and small stature, he would be great for a ranch horse or youth all-around competitor.

## LOT 5 Passion To Excel

Sire: Amber Pass	Uncle Geoff	Sure Tuffy Too
	Maybelleni (TB)	Skips Fancy Rose
		Amber Pass (TB)
		LUSA (TB)
Dam: Romantic Sensation	Son Of A Roman	Son Of Bagdad
	Rug Burn	Lettys Go
		Dance With Dan
		Magic Carpet Ride



Passion to Excel, “Slate”, is a 2017 dark bay AQHA Appendix gelding out of a Thoroughbred daughter of Son Of A Roman. Son Of A Roman (TB) has produced 6 AQHA point earners with 209 Halter and Performance points, 1 Halter and 9 Performance ROMs. Slate is by Amber Pass, a ROM earner in Hunter Under Saddle, Hunter Hack, and Working Hunter. Amber Pass is a proven producer of quality hunter type progeny. This big bodied yearling has a beautiful gait and is ready to start his promising show career.

## LOT 6 Your Passion

Sire: Amber Pass	Uncle Geoff	Sure Tuffy Too
	Maybelleni (TB)	Skips Fancy Rose
		Amber Pass (TB)
		LUSA (TB)
Dam: Romantically Yours	Son Of A Roman	Son Of Bagdad
	Rug Burn	Lettys Go
		Dance With Dan
		Magic Carpet Ride



Your Passion, “Sky,” is a 2017 bay AQHA Appendix gelding by Amber Pass, a producer of AQHA and PHBA point earners. Amber Pass has proven to produce athletic offspring with great minds and light floating movement and this gelding is a perfect example of this quality. Sky is out of a Thoroughbred daughter of Son Of A Roman, a producer of 6 AQHA point earners including World Show qualifiers. Sky will make an amazing hunter prospect.

## LOT 7 Whiskey Freckle

Sire: Joes Irish Barcelena	Paddys Irish	Peppy San Badger
	Whiskey	Doc's Starlight
	Trips Barcelena	Doc O'Lena
Dam: Freckles Leo Girl		Trip Date
		Bar
	Freckles Playboy	Jewel's Leo Bars
		Gay Jay
	Miss War Chips	War Chips
		Patsy Chip



Whiskey Freckle, "Bailey", is a 2010 bay mare, granddaughter of AQHA Hall of Famer Freckles Playboy and AQHA World/Res. World Champion Sire and NRCHA All-Time Leading Sire Paddys Irish Whiskey. Bailey has previously served as a broodmare and has raised four great minded foals, including Lot #4 of this years sale. She could continue to excel as a broodmare, but has been started under saddle and could also excel in many ranch horse or speed events.

## LOT 8 Hairpin Gray Whiskey

Sire: Hairpin Whiskey Sour	Paddys Irish	Peppy San Badger
		Doc's Starlight
	Sons Alamitos	Sons Doc O Sugar
Dam: Hairpin Classy Blue		Walking on Escalon
		Gooseberry
	Valentine Red	Miss Dusty Dot
	Rogers	Hesa Eddie Hancock
	Hairpin Classy Eddie	Smooth Blue Class



Hairpin Gray Whiskey, "Raz", a 2004 gray mare sired by Hairpin Whiskey Sour, a son of the AQHA World/Res. World Champion Sire and NRCHA All-Time Leading Sire, Paddys Irish Whiskey. Raz's dam's side is heavily influenced by Hancock bloodlines including Valentine Red Rogers and Hesa Eddie Hancock. Raz is a very sweet and quiet mare, but due to a soft tissue injury she is strictly being sold as broodmare sound. Raz has produced 3 foals with wonderful temperaments and trainability.

## HOKIE HARVEST ONLINE HORSE SALE

Bidding opens Monday, October 1st, 2018  
 Bidding closes Friday, October 26th, 2018 at 6pm  
 Auction site: <https://horsesales.cals.vt.edu/>  
 Sale Day Phone: Lisa Nulton (585) 662-3102

### Reference Sires

#### **Amber Pass** 2001 Bay AQHA



Amber Pass, "Stan" is a maternal brother of All Inclusive, a Superior HUS and ROM Open Performance earner. Stan has excellent conformation and an outstanding temperament that is successfully passed on to his get. Out of the thoroughbred mare Maybelleni, daughter of Graded Stakes winner Amber Pass (Thoroughbred) and dam of multiple track winners, Stan displays a high degree of muscling with the light, floating movement of his Thoroughbred lineage. Stan has earned his Register of Merit in Hunter Under Saddle, Hunter Hack and Working Hunter. Virginia Tech is proudly offering two yearlings (Lot 5 & 6) by Amber Pass this year.

#### **Boons Hired Hand** 2004 Red Roan AQHA



Virginia Tech is proud to offer one two-year-old (Lot 7) by Boons Hired Hand, "Boon". During his time standing at stud for the Virginia Tech breeding program, Boon produced numerous quality ranch type and reining stock. Boon's offspring display exceptional trainability and temperaments. Boon is the grandson of Peptoboonsmal, a legendary cutting horse sire since 2001. Peptoboonsmal's progeny have won over \$20 million dollars, showing tremendous success across all disciplines. This two-year-old will be the last foal offered by Boons Hired Hand.

#### **Pepto Cee Lena** 2004 Black AQHA



Pepto Cee Lena, "Shaq" is sired by the famous Peptoboonsmal whose offspring have earned more than \$20 million. Shaq is out of Holly Cee Lena a NCHA earner and NCHA producer of \$208,804. He is a beautiful black stallion that is structurally correct, athletic, and has a wonderful disposition. Shaq has proven his outstanding athleticism through an extensive show record. He is a NCHA money earner, AQHA Reserve World Champion Amateur Performance Halter, Open Performance ROM, Open Halter ROM, and point earner in performance halter, reining, working cow horse, and ranch. Shaq has also qualified for AQHA World Show every year from 2012-2016. Virginia Tech will proudly be offering one yearling filly (Lot 1) by Pepto Cee Lena.

#### **Kings Power Stroke** 1996 Black AQHA



Kings Power Stroke is owned by Big Sky Farm of Dacula, Georgia and is generously leased to the Virginia Tech equine program. Kings Power Stroke comes from a long line of proven performance horses with strong foundation genetics. He is sired by one of the best sons of NRHA Hall of Famer Continental King, King Of Four Mac. King of Four Mac was a NRHA money earner and earned 124 AQHA points. Kings Power Stroke is a NRHA money earner and AQHA ROM earner himself. This stallion has a kind disposition and excellent conformation which he passes down to his offspring. With a very limited foal crop, Kings Power Stroke has produced NRHA money earners, a performance ROM earner, and Superior Performance earner. This year Virginia Tech is offering three yearlings (lot 2, 3, & 4) by Kings Power Stroke.



**DewEZE®**  
DECADES OF DURABILITY



**TRIPLE P FARMS**

📍 APPOMATTOX, VA 📞 (434) 841-1862



**BEEF CATTLE  
OPERATIONS**

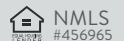
**LOANS FOR:**

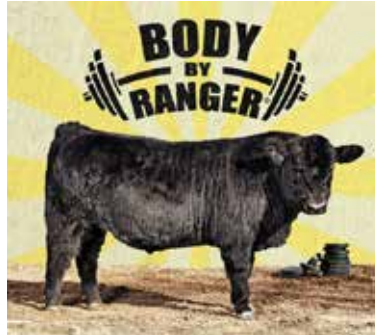
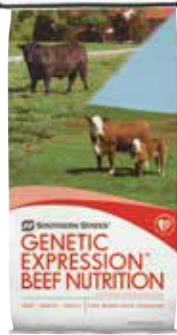
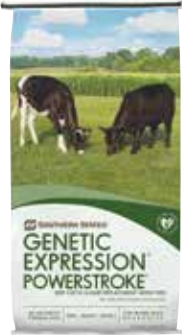
- Cow/calf pairs, replacement heifers, stocker and feeder cattle
- Large and small tracts of land
- Barns, outbuildings, fences and roads
- Operating expenses
- Purchasing or leasing machinery, equipment and vehicles



*Loans for  
Farms, Homes & Land!*

800.919.FARM (3276)  
FarmCreditofVirginias.com





# *Beef Nutrition* **HEADQUARTERS**

*Virginia Beef Nutrition Reps:*

**DAVID BABER**

David\_Baber\_Sr@cargill.com

804-357-1965

**TOMMY BARRON**

Tommy\_Barron@cargill.com

540-871-6509

**TYLER COCKERHAM**

Tyler\_Cockerham@cargill.com

540-336-1980



Farmer owned since 1923.

SOUTHERNSTATES.COM

*\* Denotes Chairperson*



Standing (L-R) - Sale Ring, Load Out, & Clean Up Committee: Brittany Harless, Blake Haislip, Zach Croft, Justin McDonald, Jarod Faris, Matthew Tribble, Caleb Galbraith, Jameson Cockram, Josh Witt, D.J. Dyer, \*Ethan Cundiff, Ben Nunnally  
 Kneeling (L-R) - Food and Beverage Committee: Hannah Foster, Samantha Spiers, Georgia Stover, \*Amber Smith, Chris Green, Adam Walton, Tyler Powell, Brooks Holland, Kevin McDonald, Luis del Campo, Lindsey Anderson, Chelsea Bickley, Victoria Dell  
 Sitting (L-R) - Catalog & Social Media Committee: Jasmine Vaughan, Jonathan Ellis-Smith, Madison Venhuizen, Tierra Scott, Emily Riley, Claudia Bollinger, \*Sarah Baynard, Madeline Wood, Cassidy Rabun



Standing (L-R) - Clipping & Photography Committee: Lauren Mello, \*Gracie Bailey, Penny Pence, Nicole Eisert, Rachel Kellogg, Kurt Bulgrin, Brandon Matney, David Lerch, Corbin Herdt, Jhett Wheeler, John-Robert Helsley, Brittany Truax  
 Kneeling (L-R) - Animal Display & Sale Preparation Committee: Zachary Gray, Jeremy Petrenko, Caleb Webb, Skylar Elliott-Honig, Elijah Griles, \*Jacob Lewis, Alex Bates, Chace Wilson, Carly Highkin, Rachel Gordon  
 Sitting (L-R) - Clerking Committee: Ashton Duncan, Aaron Smith, Erin Amiss, \*Will Boyd, Jackie Rexrode, Katie Settle, Carter Roberts



Standing (L-R) - Advertising Committee: Lindsey Gent, Emmily Woods, Aleks Halili, Andrew Baker, Hunter Fariss, Camden Franklin, \*Sarah Vest  
 Kneeling (L-R) - Registration Committee: Frankie Snider, \*Lizzie Funkhouser, Alex Botkin, Preston Caton, Savannah Morgan, Ginna Morris, Bailey McGill  
 Sitting (L-R) - Decorations Committee: Maiya Pullin, \*Jordann Sipe, Antonia Baker, Katelyn Benson, Eric Bosworth, Caitlin Conner



COLLEGE OF AGRICULTURE AND LIFE SCIENCES  
ANIMAL AND  
POULTRY SCIENCES  
VIRGINIA TECH.

Dr. Dan Eversole  
3440 Litton-Reaves Hall (0306)  
Blacksburg, VA 24061

# FIRST CLASS MAIL

Presort First-Class  
US Postage  
PAID  
Boelte-Hall LLC

